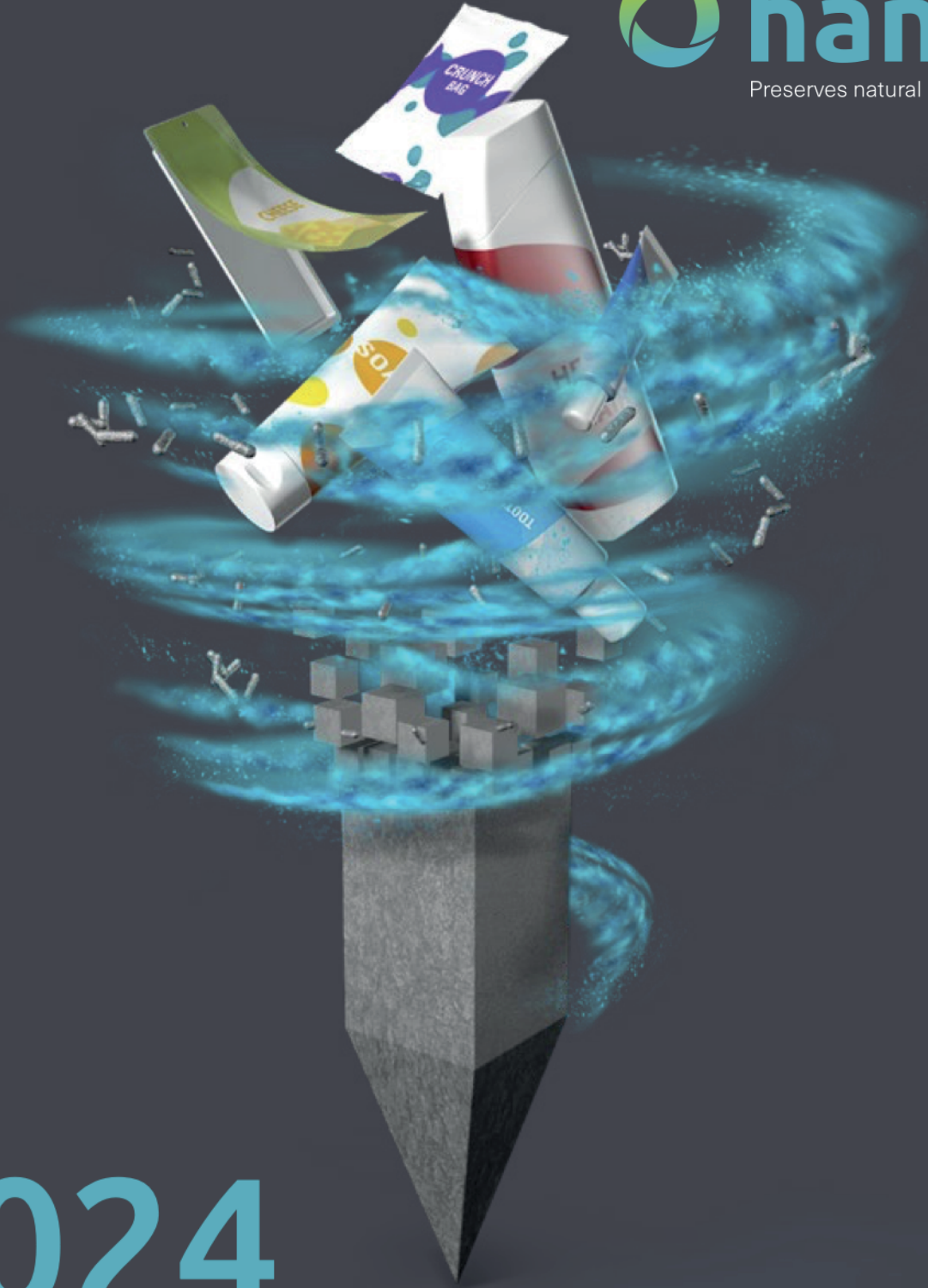




YOUR PLASTICS®

RECYCLED PLASTIC · URBAN & RURAL MOBILIARY



2024 Product list

www.hanit.de

@ www.yourplastics.es

✉ info@yourplastics.es

☎ 606 187 794 / 629 937 328

📍 P/ Estació 19. 25600 **BALAGUER** (Lleida).



Ulrich Kossin

Company founder HAHN Kunststoffe

Many people are fascinated to hear about Ulrich Kossin's path of life, being expelled from his home in Silesia at the age of 7 with his family and having to start all over with "nothing". The state school pupil managed to build an internationally operating business, which is now a global leader in the world of plastic recycling.

Ulrich Kossin was a pioneer with intelligence. He began his career as a self-employed tax consultant in Vreden, Westfalia. The creation of products, however, has always fascinated him. The introduction of the German Packaging Regulations of 1991 gave him the impulse to found a plastic recycling company. This led Ulrich Kossin to manufacture recycled plastic products for the first time in 1993 on the former military air base Hahn in Rhineland-Palatinate.

The recycling of plastics was pioneering work: the first 10 years were particularly challenging. This, however, did not stop Ulrich Kossin from doing what he believed in and endure the hard times. In the beginning, the product quality was at times unacceptable, preventing posts and other products from even leaving the company premises. Creating a homogenous mass and good products out of household waste plastics (PP, PE, multilayer, impurities) was challenging - but his enthusiastic employees and Ulrich Kossin found the right path. Comparing the first batches of posts with today's quality still makes us smile.

Ulrich Kossin passed away in 2014, but HAHN Kunststoffe still stays true to its roots and is continuously working on diverting raw materials from the landfills to create useful and durable products for the benefit of the environment.



PLASTIC RECYCLING IS OUR PASSION

Why the world of hanit® is unique. In addition to reducing waste, a key and necessary step towards protecting our environment and preserving important livelihoods is in particular a sustainable circular economy and therefore high quality recycling of existing reusable materials. At HAHN Kunststoffe, we see plastic recycling as an ideal way to recycle consumed resources and counteract the lack of resources. For this reason, as a company we have set ourselves the goal of being a global leader in the production of recycled finished parts made from post-consumer plastics to help shape the future in a more sustainable way.

We currently process several 10.000 tons of recycled material a year in the form of films and mixed plastics from the Dual Systems. With our own treatment processes, we are able to achieve maximum recycling rates and keep the number of materials that end up in the waste stream to a minimum. In this way, hanit®, our material is produced, and the starting material for new plastic products. Instead of primary raw materials such as crude oil, we only use plastic from household and production waste to produce hanit®. Through this pioneering and efficient use of raw materials and optimal resource management, we at HAHN Kunststoffe want to make a positive contribution to society and our environment.

We believe in hanit® as a future-oriented sustainable material. The robust and weather-proof artificial wood is highly resistant and ideal for products that are exposed to high loads. Moisture, frost or UV rays cannot cause any permanent damage to our material - the perfect prerequisite for a very long service life. And hanit® is not only made from 100% recycled plastic, it is also 100% recyclable, thereby conserving resources and the environment over its entire life cycle. That is one of the reasons why many of our products since 2005 have been awarded the Blue Angel, an eco-label introduced by the German government.

1998

hanit® trademark entered into the trademark register



2003

HAHN Kunststoffe GmbH has over 100 employees



1999

Acquisition of the company premises of HAHN Kunststoffe GmbH



2005

Award of the Blue Angel, the German government's eco label



2018

25th anniversary of HAHN Kunststoffe GmbH



2022

Foundation of the sales subsidiary HAHN Iberia Plástico Reciclado S.L.U. in Irún, Spain



2018

Foundation of sales and production subsidiary in Italy through takeover of PRECO SYSTEM s.r.l. in Gemona del Friuli, Italy



2023

Construction of a new processing plant, resulting in increased processing capacities



PROCESSING TIPS

Tips & tricks for working with hanit®

Environmentally-friendly hanit® consists of 100% recycled plastic and is characterised by its wide range of uses. In addition to being environmentally friendly, it is the outstanding product performance which makes the material unique, since hanit® combines the positive characteristics of wood, stone, plastic and concrete, offers a high utility value outdoors and is great value for money. hanit® quickly pays for itself on every level. Products made from hanit® can be easily installed without a great deal of previous technical knowledge, are easy to transport and protect the climate and your budget by reducing the amount of new material that is required.

Special characteristics of recycled plastic

hanit® is just as easy to process as wood, and can be machined with wood and metal processing tools and machinery without problems, meaning that our recycled plastic products can be flexibly adapted to any project, and are suitable for almost any use. However, due to the properties of the material, there are several special characteristics which need to be taken into consideration when machining hanit®.

Recycled products have a closed surface. The core, on the other hand, has a partially grid-like structure that becomes visible during machining. However, this material-related characteristic does not affect the machining and stability of the material.

Even though hanit® is much lighter than concrete or stone, its high density is clear during processing. This density gives the material its strength and makes it a popular alternative with many professionals.

Machining recycled plastic normally results in more wear on tools, so we recommend the use of carbide-tipped tools for working with hanit®. Some hanit® products also feature metal reinforcement for more even stability. Cuts must be avoided when using these products. Swarf can occur when machining recycled plastic, as is also the case with wood. Collect it using appropriate extraction systems or devices so that it can be recycled or disposed of afterwards.



Nailing

Hammer and nails or guns are also not a problem for our hanit® recycled plastic. It should be noted during fixing that penetrating into the profiles is somewhat more difficult than with wood because of the compact surface.



Documents

Static verifications, installation recommendations and assembly instructions are available for many products and applications. You can find more information at www.hanit.de in the download section or directly from the relevant product.



Knocking in profiles

If recycled profiles are being knocked in, we recommend using a pile driver or edge protector to avoid damage to the product.



Screwing

When hanit® recycled products are being screwed in place, the profile that is being secured, such as a plank, decking or a square profile, should be pre-drilled. The drill hole should be bigger than the screw. We also recommend elongated holes to take account of the thermally induced expansion of the material.



Expansion distance

Planks, thresholds and square profiles made from hanit® recycled plastic may not be press fitted. Since the profiles can have temperature-related length fluctuations of +/- 1.5 %, an expansion distance (expansion gap) should be adhered to during installation.



Support spacing

In contrast to wood or metal products, recycled plastic is less rigid and more flexible. This special material characteristic should be taken into consideration accordingly, particularly when building jetties, fences and terraces.



TOOL SELECTION

hanit® is easy to work with



Sawing & cutting

An optimum cutting pattern can best be achieved with recycled plastic using fast band saws and circular saws with slightly straight-set teeth made from carbide. We recommend removing swarf quickly to avoid clogging the recycled plastic.



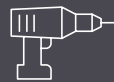
Planing

An electric plane can be used to machine hanit®. The surface depends on the feed rate, cutting speed, clearance and rake angle and the condition of the blades to a considerable extent.



Deburring

Angle grinders are not suitable for cutting work on hanit® because of the high rotational speed. On the other hand, an angle grinder can be used without problems on plastic parts which have burrs or edges after machining.



Drilling

A standard drill with a twist angle of 20 to 30° and a tip angle of 110 to 120° can be used in the majority of cases when drilling recycled plastic. Relaxation strokes should occasionally be used to avoid high frictional heat, particularly at greater drilling depths.



Milling

When hanit® artificial wood is being milled, a swarf cross-section that is as large as possible should be selected in order to minimise the amount of heat generated by swarf removal. The maximum cutting depth and feed rate should be used, whereas the cutting speed should be slow. To increase the service life of the tools, we recommend using milling cutters made from carbide.

RECYCLED PLASTIC PRODUCTS

Safety guaranteed

Many conventional materials often cannot withstand rain, UV rays and frost long term. hanit® recycled plastic has proved itself as a low-maintenance durable alternative in many different areas because hanit® is extremely resistant to any environmental influences. The special material properties enable a very wide range of applications and maximum lasting stability even under extreme loads, thereby ensuring a high level of flexibility and a wide range of possible uses.



Low maintenance & durable

Products made from hanit® are not only weather-proof, rot-proof and moisture-repellent, they are also extremely resistant to oils, alkaline solutions, acids and salt water. This makes them reliable all-rounders for outdoor use. These special characteristics also mean that hanit® products are exceptionally low-maintenance. In fact, with hanit®, regular maintenance work is a thing of the past. This is why synthetic wood is a reliable long-term solution in many areas and reduces maintenance costs many times over.



Splinter-proof

Our products also offer another important benefit: they are permanently splinter-proof, ensuring that the risk of injury when working with the material and during subsequent use is reduced to a minimum. This is especially practical for our hanit® flooring, because it's safe to run around barefoot and play on it without risk of injury.



Eco-friendly

Many of our products have been awarded the German government's Blue Angel eco label since 2005. The Blue Angel certifies that products and services meet high health, environmental and usage requirements. hanit® is non-toxic in accordance with DIN EN 71-3 (European standard for the safety of toys) and it meets the same high standards that apply to children's toys.



100% recycled plastic

hanit® is a resource-saving material because it is made of 100% recycled plastic and does not require any new fossil raw materials. What's more, hanit® is 100% recyclable.



Economical

hanit® recycled products are very durable thanks to their special material properties and therefore maintain maximum stability and an attractive appearance even after many years. In line with this long service life, we give a full 20-year warranty on the majority of our range – for an all-round feeling of security.



Easy processing

hanit® recycled plastic offers a perfect combination of robustness and flexibility. Despite the particularly stable material structure, our products can be flexibly adapted for specific building projects and applications, enabling a high level of creative freedom.



Can be processed like wood

Drilling, sawing, screwing – all no problem with our recycled plastic because synthetic wood can be worked as easily and flexibly as wood. And the best thing is that no special tools are required, as hanit® can be finished with conventional woodwork and metalwork tools and machinery.



Lightweight

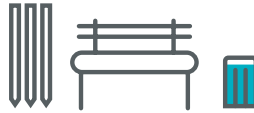
hanit® is easy and flexible to work with, and it even weighs only a third of what traditional concrete products weigh on average. Even large beams or heavy L-bricks can be transported effortlessly, and transport costs can be saved. And they can then be positioned without heavy machinery. The lower weight makes all kinds of construction and design projects easier and more flexible to work on.

HOW TO TURN SHORT-LIVED PACKAGING INTO DURABLE PRODUCTS?

THE RECYCLING LOOP – YOUR ROLE

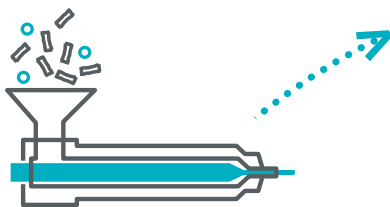
Everyone can contribute to effective recycling and environmental protection. Here are some tips:

- » Only discard your packaging in designated receptacles
- » Plastic cups do not need to be rinsed, removing bigger residues is more than sufficient
- » Fully remove any aluminium lids, this makes sorting significantly easier.
- » Do not stack any packaging on top of each other, this makes it harder to separate.



This is how all our products are made.

At the end of their life, the products can easily be **recycled again**. Thus starting the cycle again.



The pellets are melted and injected into moulds. Sometimes colourant is added to the mix.



It all begins in private households. That's where packaging gets sorted into recycling bins...



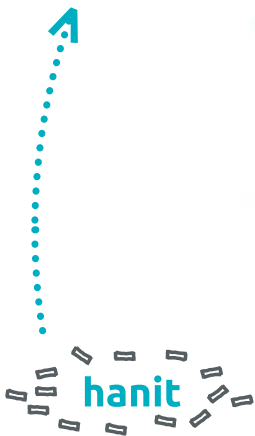
... or designated waste bags.



The contents of the bins and bags are transported to sorting facilities.



That's where the packaging waste is separated by material (such as tin or plastics). Unsuitable leftover material is sorted out.



The bales are processed into pellets, which are the basis for **hanit**[®], our recycled material.



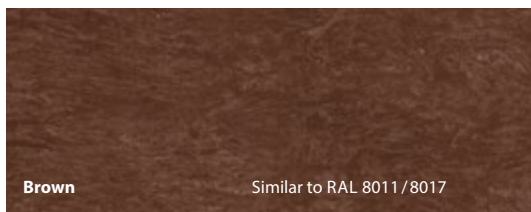
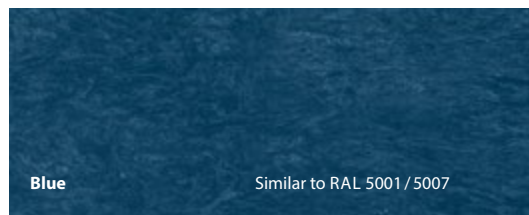
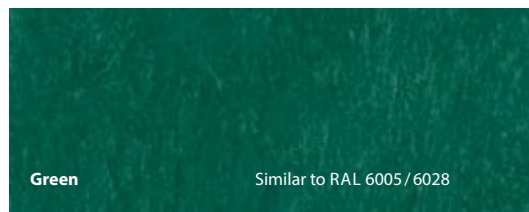
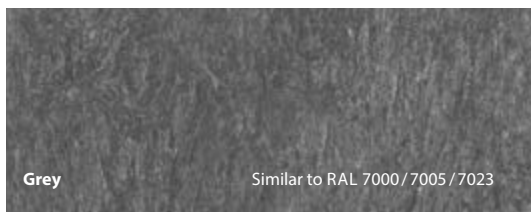
The plastic packaging waste is baled and delivered to **HAHN**.

COLOUR RANGE OF hanit®

hanit® recycled products are, depending on the product, available in various colours. Each product starts out as a grey granulated material, which is coloured during the manufacturing process.

PLEASE NOTE THE FOLLOWING FOR hanit® COLOURS:

- » When using recycled materials (hanit® pellets) variations in colour and visual appearance of the products can occur. For this reason, the depicted colour tiles are meant for orientation only. We cannot accept returns based on variations in colour and surface finish.
- » Grey profiles do not have any colourant added. The colour tone is the result of a production process without added colour (natural). As a result of variations in the raw material mix, colour deviations are more likely to appear in grey profiles.
- » All other colours are achieved by colouring the grey granulate. The profiles are fully coloured throughout not just the surface.
- » hanit® profiles are characterised by their muted colours which emphasise the natural character of the products.
- » Colours and products can fade over time. This is due to a natural process which does not impair the functionality of the products. Colour changes such as fading are exempt from the warranty.





hanit®

sustainable, non-toxic,
Blue Angel-certified

WE'RE
LEAVING
THE TREES
IN THE
FOREST



www.blauer-engel.de/uz30a

INFORMATION ABOUT THE BLUE ANGEL™

SUSTAINABLE, NON-TOXIC – CERTIFIED WITH THE BLUE ANGEL

The German government's Blue Angel has existed since 1978. This label identifies products and services that are "more environmentally friendly than comparable conventional products and services". For a product to receive the Blue Angel, it must meet the following criteria, among others:

- "Saves resources in production",
- "Made of sustainably produced raw materials",
- "Is especially long-lasting" and
- "Can be recycled easily".

hanit® products meet all these criteria in an exemplary manner. Because the base material that was developed in-house by HAHN is a sustainably produced raw material that sets ecological standards. Instead of using fossil resources, hanit® is based on recycling. That's why so many of our products have been awarded the Blue Angel eco label since 2005.

But not all of them, because some products have especially high stability and durability requirements, and for this reason, they might need reinforcement, for example. As these reinforcing steel parts are manufactured conventionally and purchased by us, the components do not comply with Blue Angel requirements, which means the product as a whole cannot be certified.

For our customers, this means that even products that don't have the Blue Angel due to certain specific components are still eco-friendly. The high amount of recycled pellets made of hanit® is a guarantee that resources and the environment are being saved and protected. Sustainability is always top priority with our products – we vouch for that with our name!

Note: Blue Angel-certified products can be recognised easily by the presence of the Blue Angel logo on the product page.

HOW TO USE THIS DOCUMENT

Using our helpful symbols you can easily identify whether the desired hanit® product is suitable for your application or whether it is certified with the Blue Angel label.



BLUE ANGEL CERTIFIED



BUILDING TECHNOLOGY



MATERIALS



ROAD CONSTRUCTION



HORTICULTURE & LANDSCAPING



EVENTS



AGRICULTURE



ALL ITEMS WRITTEN IN COLOUR ARE IN STOCK AND ARE SUBJECT TO A SHORTER DELIVERY TIME. ALL OTHERS ITEMS ARE OF COURSE STILL AVAILABLE



DOCK & HARBOUR CONSTRUCTION

» How to use this brochure

Size/ model	Colours		Item number	Available colour for the size/model			
Length	Ø 11 cm, hollow profile		○ ●				
	Length cm	Weight kg	Pal. Pcs.	Colour	Item No.	Price / Pc. in € Net	Net Price
Weight ¹ per piece	60	3,3	125	Grey Brown	1000152 1000156	4,49 4,94	
	80	4,3	90	Grey Brown	1000153 1000157	5,86 6,44	
Pieces per packaging unit ²	100	5,4	100	Grey Brown	1000154 1000158	7,33 8,08	

¹ As hanit® is a recycled product, weight can vary slightly.

² Packaging units are only meant as a helpful guide. They are not order specifications. Normally, products longer than 200 cm will be delivered on a double euro pallet.

³ We will be pleased to prepare a freight offer for you.

CONTENT

01 BUILDING AND CONSTRUCTION	PAGE 15
» Palisades & Edging	» Beams & Square Profiles
» L-Stones	» Boards & Sheets
02 FENCING AND BARRIERS	PAGE 39
» Posts	» Bollards
» Fence & Paddock Construction	» Barriers & Privacy Fences
03 GROUNDWORK AND SURFACES	PAGE 59
» Footpath Planks & Piles	» Decking
» Paddock Slabs & Eco Slabs	» Ground Reinforcement
04 OUTDOOR SPACES AND FURNITURE	PAGE 73
» Benches & Tables	» Sets & Round Benches
» Senior's & Youth Benches	» Bench Boards & Accessories
» Planters & Raised Beds	» Litter Bins & Composters
05 PLAYGROUND FURNITURE	PAGE 113
» Children's Benches & Children's Tables	» Sandboxes
» Children's Raised Beds	» Mud Tables
APPENDIX	PAGE 126
» Index	» Terms and Conditions of Sale and Delivery



BUILDING AND CONSTRUCTION

...it lasts and lasts and lasts.

On paper, building is easy. Real life is a little more complicated but it helps to use quality materials that are durable, easy to work with and available in a variety of shapes and sizes. If they're also weatherproof, rot-free, splinter-free and maintenance-free, it can really pay off in the long-run.

HAWN sheets, fences, decking and boards offer an excellent price to quality ratio. In like-for-like comparisons, hanit® out-performs wood, steel and concrete. As our Blue Angel Award goes to show, hanit® is water-neutral, non-toxic and environmentally-friendly.

- » Splinter-free
- » Low risk of injury
- » Rot-free
- » Made without additives
- » Lighter than concrete
- » Simple processing - similar to wood
- » Maintenance-free

PLAYGROUNDS**FENCES****EDGING****SHELTER FASCIA****Palisades**

- » Ogee palisades, hollow profileS. 16– 18
- » Ogee palisades, solid profileS. 16– 18
- » Round palisades, hollow profileS. 20– 21
- » Round palisades, solid profileS. 20– 21
- » Rectangular palisades, hollow profileS. 22– 23

Boundaries & building materials

- » L-stone S. 24
- » L-Stone corner S. 25
- » BeamsS. 26– 27
- » Grass edging S. 27
- » Boundary stone S. 27
- » Garden edging S. 28
- » Square profilesS. 29– 30

Sheets

- » Standard sheet S. 31
- » Foundation pad S. 31
- » Amphibian guard/bank reinforcement S. 32
- » Burrowing barrier S. 32

Boards

- » Board profiles standard, reinforced S. 33
- » Board profiles standardS. 34– 35
- » Board profile with tongue and groove S. 36
- » Board profiles with tongue and groove,
reinforced S. 36
- » Stall boards S. 37



OGEE PALISADE

Solid or hollow profile



Colours



Ø 11 cm, hollow profile

Length cm	Weight kg	Pal. Pcs.	Colour	Item No.
60	3,3	125	Grey	1000152
			Brown	1000156
80	4,3	90	Grey	1000153
			Brown	1000157
100	5,4	100	Grey	1000154
			Brown	1000158

Ø 11 cm, solid profile

Length cm	Weight kg	Pal. Pcs.	Colour	Item No.
120	9,9	70	Grey	1000062
			Brown	1000015
180	14,9	70	Grey	1000065
			Brown	1000018

Ø 13 cm, hollow profile

Length cm	Weight kg	Pal. Pcs.	Colour	Item No.
60	4,0	72	Grey	1000160
			Brown	1000164
80	5,3	54	Grey	1000161
			Brown	1000165
100	6,6	54	Grey	1000162
			Brown	1000166

Ø 13 cm, solid profile

Length cm	Weight kg	Pal. Pcs.	Colour	Item No.
120	13,8	36	Grey	1000070
			Brown	1000023
150	17,3	36	Grey	1000071
			Brown	1000024
180	20,7	36	Grey	1000072
			Brown	1000025

PRODUCT INFO

- » Bevelled top
- » Hollow versions available for selected palisades
- » Black available in selected sizes
- » Slope reinforcement
Note: Not all palisade sizes are suitable for slope reinforcement. Contact HAHN for details.



HOLLOW PROFILE ADVANTAGES

The load capacity of the hollow palisades differs only slightly from solid palisades. Conversely, hollow profiles have several advantages:

- » Lower cost due to less material used
- » Lower weight = lower transport costs
- » Lower weight makes installation easier



Ø 16 cm, hollow profile ○ ●

Length cm	Weight kg	Pal. Pcs.	Colour	Item No.
60	6,2	60	Grey	1000179
			Brown	1000175
80	8,2	42	Grey	1000180
			Brown	1000176
100	10,2	42	Grey	1000181
			Brown	1000177

Ø 16 cm, solid profile ○ ●

Length cm	Weight kg	Pal. Pcs.	Colour	Item No.
120	20,9	30	Grey	1000084
			Brown	1000037
150	26,1	30	Grey	1000085
			Brown	1000038
180	31,3	30	Grey	1000086
			Brown	1000039

REQUIREMENT PER METRE



Ø 11 cm

- » Slump (S): ca 9.5 cm
- » Required quantity (B): approx. 10.5
- » Fillet angle: approx. 60°

Ø 16 cm

- » Slump (S): ca 13.5 cm
- » Required quantity (B): approx. 7.5
- » Fillet angle: approx. 60°

Ø 13 cm

- » Slump (S): ca 11 cm
- » Required quantity (B): approx. 9.0
- » Fillet angle: approx. 60°

Ø 20 cm

- » Slump (S): ca 15.3 cm
- » Required quantity (B): approx. 6.5
- » Fillet angle: approx. 80°





Ø 20 cm, hollow profile				
Length cm	Weight kg	Pal. Pcs.	Colour	Item No.
60	9,0	32	Grey	1000146
			Brown	1000135
80	11,9	24	Grey	1000145
			Brown	1000140
100	15,1	24	Grey	1000134
			Brown	1000141

Ø 20 cm, solid profile				
Length cm	Weight kg	Pal. Pcs.	Colour	Item No.
200	50,6	16	Grey	1000093
			Brown	1000046



TIPS & TRICKS

Please refer to the installation recommendations and the corresponding data sheet. These can be found on our website www.hanit.de and can be downloaded from the selected product page.

For vertical installations, approx. 1/3 of the palisade length should go into the ground. Bear this in mind when choosing palisade length for your project.

For horizontal ogee palisade installations, simply peg to the ground – making sure to pre-drill and countersink the palisade.







ROUND PALISADE

Solid or hollow profile



Colours



Ø 10 cm, hollow profile				
Length	Weight	Pal.	Colour	Item No.
cm	kg	Pcs.		
60	2,9	66	Grey	1100237
			Brown	1100219
80	3,8	53	Grey	1100238
			Brown	1100220
100	4,7	53	Grey	1100239
			Brown	1100221

Ø 12 cm, hollow profile				
Length	Weight	Pal.	Colour	Item No.
cm	kg	Pcs.		
60	3,7	56	Grey	1100241
			Brown	1100223
80	4,9	43	Grey	1100242
			Brown	1100224
100	6,0	43	Grey	1100243
			Brown	1100225

Ø 10 cm, solid profile				
Length	Weight	Pal.	Colour	Item No.
cm	kg	Pcs.		
125	9,1	33	Grey	1100099
			Brown	1100043
150	11,0	33	Grey	1100100
			Brown	1100044
175	12,8	33	Grey	1100101
			Brown	1100045
200	14,6	33	Grey	1100102
			Brown	1100046

Ø 12 cm, solid profile				
Length	Weight	Pal.	Colour	Item No.
cm	kg	Pcs.		
125	13,1	28	Grey	1100110
			Brown	1100054
150	15,8	28	Grey	1100111
			Brown	1100055
175	18,4	28	Grey	1100112
			Brown	1100056
200	21,0	28	Grey	1100113
			Brown	1100057
225	23,7	28	Grey	1100114
			Brown	1100058
250	26,3	28	Grey	1100115
			Brown	1100059
280	29,5	28	Grey	1100116
			Brown	1100060

PRODUCT INFO

- » Bevelled top
 - » Hollow versions available for selected palisades
 - » Slope reinforcement
- Note: Not all palisade sizes are suitable for slope reinforcement. Contact HAHN for details.



HOLLOW PROFILE ADVANTAGES

The load capacity of the hollow palisades differs only slightly from solid palisades. Conversely, hollow profiles have several advantages:

- » Lower cost, due to less material used
- » Lower weight = lower transport costs
- » Lower weight makes installation easier

Ø 15 cm, hollow profile				
Length cm	Weight kg	Pal. Pcs.	Colour	Item No.
60	5,8	60	Grey	1100245
			Brown	1100227
80	7,6	48	Grey	1100246
			Brown	1100228
100	9,5	48	Grey	1100213
			Brown	1100229

Ø 20 cm, hollow profile				
Length cm	Weight kg	Pal. Pcs.	Colour	Item No.
80	12,5	24	Grey	1100216
			Brown	1100232
100	15,6	24	Grey	1100217
			Brown	1100233

Ø 12 cm, solid profile				
Length cm	Weight kg	Pal. Pcs.	Colour	Item No.
125	20,6	30	Grey	1100120
			Brown	1100064
150	24,7	30	Grey	1100121
			Brown	1100065
175	28,8	30	Grey	1100122
			Brown	1100066
200	32,8	30	Grey	1100123
			Brown	1100067

REQUIREMENT PER METRE



Ø 10 cm

» Required quantity (B): approx. 10.0

Ø 12 cm

» Required quantity (B): approx. 8.3

Ø 15 cm

» Required quantity (B): approx. 6.7

Ø 20 cm

» Required quantity (B): approx. 5.0

TIPS & TRICKS

Please refer to the installation recommendations and the corresponding data sheet. These can be found on our website www.hanit.de and can be downloaded from the selected product page.

Working with recycled plastic is very similar to working with wood. It can be cut, sawn, drilled or routed. For example, reflectors and warning signs can be simply screwed on. This means that HAHN palisades can be easily adapted for a limitless variety of uses. Feel free to be creative!



hanit® SNOW RAILS

Use 12 x 280 cm round profiles

When attaching to the roof, use three hooks per profile (one in the centre, two at each end). Place the first profile 25 cm in from the edge of the roof and leave a small gap between each profile.





RECTANGULAR PALISADE

Hollow profile

Colours



12 x 16 cm				
Length cm	Weight kg	Pal. Pcs.	Colour	Item No.
60	6,6	60	Grey	1200018
			Brown	1200001
			Black	1200015
80	8,7	50	Grey	1200019
			Brown	1200022
			Black	1200014
100	10,8	50	Grey	1200020
			Brown	1200023
			Black	1200016



REQUIREMENT PER METRE



12 x 16 cm

- » Required quantity (B1): approx. 6.3
- » Required quantity (B2): approx. 8.4

16 x 24 cm

- » Required quantity (B1): approx. 4.2
- » Required quantity (B2): approx. 6.3

16 × 24 cm				
Length cm	Weight kg	Pal. Pcs.	Colour	Item No.
60	13,0	40	Grey Brown	1200002 1200007
80	18,0	28	Grey Brown	1200003 1200008
100	22,3	28	Grey Brown	1200004 1200009
125	27,2	20	Grey Brown	1200005 1200010
150	32,6	20	Grey Brown	1200006 1200011

ADVANTAGES RECTANGULAR PALISADES

- » Ideal for a straight finish
- » Steps, light shafts and mowing edges installed easily

Please refer to the installation recommendations and the corresponding data sheet. These can be found on our website www.hanit.de and downloaded from the selected product page.



TIPS & TRICKS

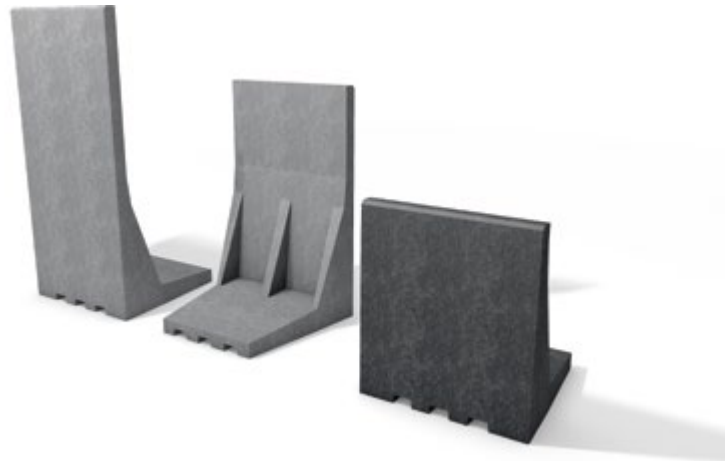
- » For vertical installations, approx. 1/3 of the palisade length should go into the ground. Bear this in mind when choosing palisade length for your project.
- » Slope reinforcement
Note: Not all palisade sizes are suitable for slope reinforcement. Contact HAHN for details.





L-STONE

The lightweight 'stone'



Colours



50 x 50 cm ○ ●					
Height cm	Weight kg	Pal. Pcs.	Colour	Item No.	
55	28,6	16	Grey	2000005	
			Black	2000008	
80	33,5	8	Grey	2000006	
			Black	2000009	
105	38,6	8	Grey	2000007	
			Black	2000010	

INSTALLATION

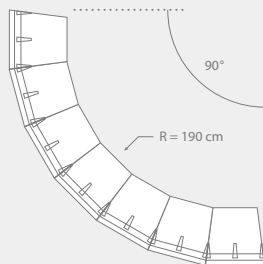
It is possible that L-stones may not align during installation due to the material properties. This can be straightened out using recycled boards.

Please refer to the installation recommendations and the corresponding data sheet. These can be found on our website www.hanit.de and downloaded from the selected product page.



TIPS & TRICKS

It's easy to create corners with L-stones. For 90 degree bends, place seven L-stones together, with each angled base/foot adjacent to the next. No need for separate corner pieces!

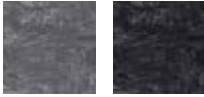




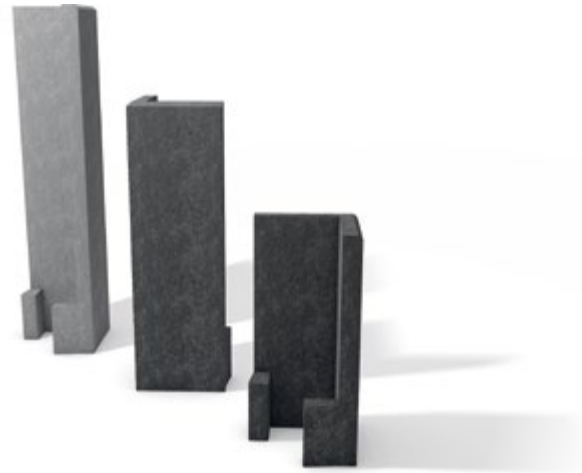
L-STONE CORNER

The perfect finish

Colours



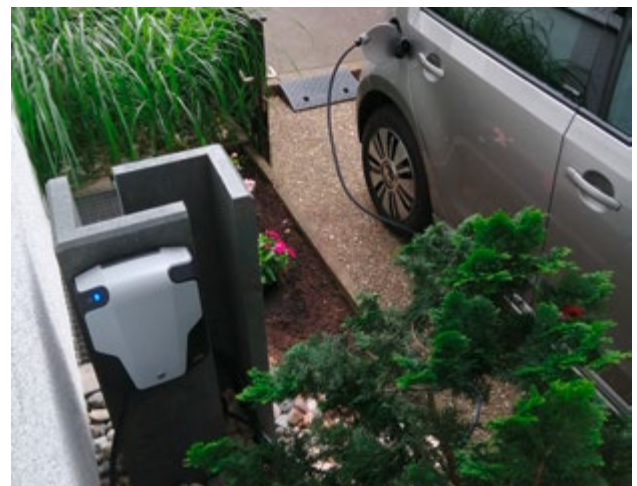
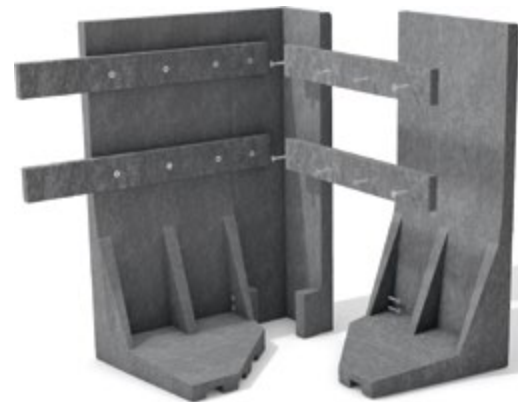
25 x 25 cm				
Height cm	Weight kg	Pal. Pcs.	Colour	Item No.
55	11,5	24	Grey Black	2000032 2000016
80	16,2	16	Grey Black	2000018 2000017
105	21,0	16	Grey Black	2000026 2000027



OUR CORNERS - A ROUND AFFAIR

- » Simple installation
- » Perfect system extension

Please refer to the installation recommendations and the corresponding data sheet. These can be found on our website www.hanit.de and downloaded from the selected product page.





BEAMS

Multiple uses



Colours



8 × 16 cm ○ ●				
Length cm	Weight kg	Pal. Pcs.	Colour	Item No.
150	17,9	30	Grey Brown	2100118 2100124
200	23,8	30	Grey Brown	2100091 2100055
250	29,8	30	Grey Brown	2100101 2100125
300	35,7	30	Grey Brown	2100102 2100052

8 × 23 cm ○ ●				
Length cm	Weight kg	Pal. Pcs.	Colour	Item No.
150	25,5	30	Grey Brown	2100029 2100019
200	34,2	30	Grey Brown	2100030 2100020
250	42,5	30	Grey Brown	2100074 2100086
300	51,0	30	Grey Brown	2100090 2100071

15,5 × 21 cm ○ ●				
Length cm	Weight kg	Pal. Pcs.	Colour	Item No.
225	68,1	20	Grey Brown	2100038 2100028

15,5 × 21 cm, with rounded longitudinal edges ○ ●				
Length cm	Weight kg	Pal. Pcs.	Colour	Item No.
225	67,2	20	Grey Brown	2100105 2100104

16 × 24 cm, with plastic reinforcement ○ ●				
Length cm	Weight kg	Pal. Pcs.	Colour	Item No.
150	53,6	15	Grey Brown	2100301 2100300
200	71,0	15	Grey Brown	2100320 2100299
250	89,0	15	Grey Brown	2100321 2100075
300	107,0	15	Grey Brown	2100322 2100298



NOTE 16 X 24 CM BEAM

- » Internal plastic reinforcement
- » Reduced voids
- » Better installation

16 x 24 cm beams are produced with an internal plastic reinforcement. This results in a higher density and provides improved screw connections.



TIPS & TRICKS

hanit® profiles are perfect for bulk storage bays and bunkers.

- » We recommend the following sizes:
 - Bulk storage back wall: 16 x 24 x 200 cm
 - Bulk storage side wall: 8 x 23 x 200 cm
- » The distance between steel beams needs to be approx. 1% wider than the length of the profiles, due to the expansion properties of the beams.
- » The bottom profile of each panel should be fixed with a post anchor.
- » The individual layers will be connected through screws, bolts, or a connecting board.
- » Profile dimensions can vary slightly. For this reason, only install the steel posts after the profiles have been delivered and measured.

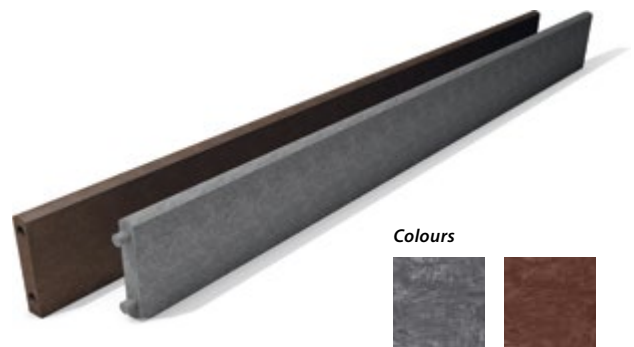
Please refer to the installation recommendations and the corresponding data sheet. These can be found on our website www.hanit.de and downloaded from the selected product page.



GRASS EDGING

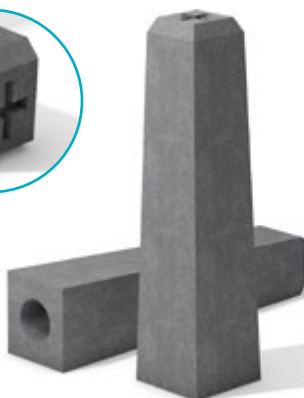
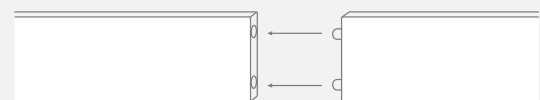
With locating system

5 x 26 cm				
Length cm	Weight kg	Pal. Pcs.	Colour	Item No.
250	30,0	30	Grey	2200006
			Brown	2200005



PROCESSING

Easy processing due to the locating system



Colours



BOUNDARY STONE

For easier, lighter surveying

12 x 12 / 9 x 9 cm				
Height cm	Weight kg	Pal. Pcs.	Colour	Item No.
50	4,0	140	Grey	2200337



GARDEN EDGING

Colours

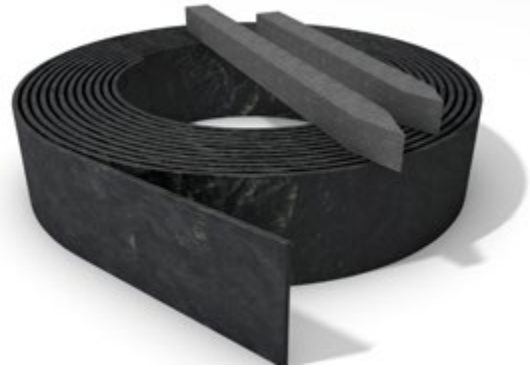


Rolled Garden Edging 0.7 x 14 cm

Length cm	Weight kg	Pal. Pcs.	Colour	Item No.
1,800	19,0	24	Black	2200010

Square post 4.0 x 4.0 cm (bundles of 8 profiles)

Length cm	Weight kg	Pal. Pcs.	Colour	Item No.
45	5,6	72	Grey	3200083
60	7,2	72	Grey	3200084



TIPS & TRICKS

We recommend using our 4 x 4 x 45 or 60 cm square posts for the installation of our hanit® garden edging. For the rolled garden edging approx. 24 posts (spaced every 75 cm) are required.





SQUARE PROFILE

The utility profile



Colours



4 x 4 cm <input type="radio"/> <input checked="" type="radio"/>				
Length	Weight	Pal.	Colour	Item No.
cm	kg	Pcs.		
200	3,0	260	Grey	2300073
			Brown	2300030
300	4,5	260	Grey	2300333
			Brown	2300351

7 x 7 cm <input type="radio"/> <input checked="" type="radio"/>				
Length	Weight	Pal.	Colour	Item No.
cm	kg	Pcs.		
200	9,1	55	Grey	2300083
			Brown	2300040
300	13,7	55	Grey	2300352
			Brown	2300353

9 x 9 cm <input type="radio"/> <input checked="" type="radio"/>				
Length	Weight	Pal.	Colour	Item No.
cm	kg	Pcs.		
200	15,1	45	Grey	2300091
			Brown	2300048
300	22,6	45	Grey	2300670
			Brown	2300021





10 × 10 cm <input type="radio"/> <input checked="" type="radio"/>				
Length cm	Weight kg	Pal. Pcs.	Colour	Item No.
200	18,6	80	Grey Brown	2300015 2300002
300	27,9	48	Grey Brown	2300161 2300140

12 × 12 cm <input type="radio"/> <input checked="" type="radio"/>				
Length cm	Weight kg	Pal. Pcs.	Colour	Item No.
200	26,8	48	Grey Brown	2300017 2300004
300	40,2	36	Grey Brown	2300298 2300301

TIPS & TRICKS

The unique properties of hanit® make it perfect for deck or patio sub-structures:

- » Can handle permanently wet or damp conditions
- » Non-absorbent: no creeping damp or capillary effect
- » Can be worked like wood using the same tools and techniques
- » Sub-structures made from hanit® can also be used with wooden decking boards

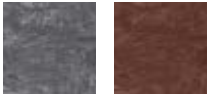
15 × 15 cm <input type="radio"/> <input checked="" type="radio"/>				
Length cm	Weight kg	Pal. Pcs.	Colour	Item No.
200	41,9	30	Grey Brown	2300105 2300062
300	62,8	20	Grey Brown	2300354 2300355



STANDARD SHEET

Virtually limitless uses as a building material

Colours



Thickness: 2.5 cm					
Width	Length	Weight	Pa.	Colour	Item No.
cm	cm	kg	Pcs.		
105	205	50,0	10	Grey	2400013
				Brown	2400031

Thickness: 5 cm					
Width	Length	Weight	Pa.	Colour	Item No.
cm	cm	kg	Pcs.		
40	150	27,9	40	Grey	2400036
40	175	32,6	40	Grey	2400004
40	200	37,2	20	Grey	2400008



PRODUCT INFO

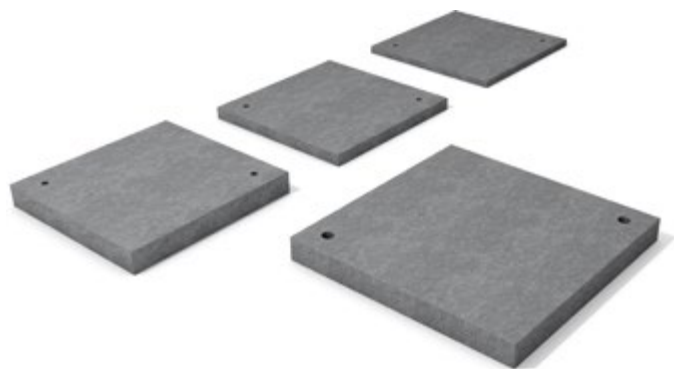
- » Can be cut, screwed and drilled just like wood
- » Can be cut to shape
- » Surface finish and colour may vary slightly



FOUNDATION PAD

With and without holes

Colours



Thickness: 2 cm, with holes					
Width	Length	Weight	Pa.	Colour	Item No.
cm	cm	kg	Pcs.		
40	40	3,0	150	Grey	2400038

Thickness: 3 cm, with holes					
Width	Length	Weight	Pa.	Colour	Item No.
cm	cm	kg	Pcs.		
40	40	4,5	150	Grey	2400005

Thickness: 5 cm, with holes					
Width	Length	Weight	Pa.	Colour	Item No.
cm	cm	kg	Pcs.		
40	40	7,5	120	Grey	2400010
50	50	11,6	80	Grey	2400050

Thickness: 7 cm, without holes					
Width	Length	Weight	Pa.	Colour	Item No.
cm	cm	kg	Pcs.		
60	60	23,0	30	Grey	2400029



AMPHIBIAN GUARD / BANK REINFORCEMENT

Multi-purpose protection

Colours



Thickness: 2.5 / 10 cm

Width cm	Length cm	Weight kg	Pal. Pcs.	Colour	Item No.
60	192	34,0	16	Grey	2400021
				Brown	2400026
80	192	42,0	16	Grey	2400019
				Brown	2400020

NOTE

Please refer to the installation recommendations and the corresponding data sheet. These can be found on our website www.hanit.de and downloaded from the selected product page.



BURROWING BARRIER

With recesses

Colours



Thickness: 2.5 cm

Width cm	Length cm	Weight kg	Pal. Pcs.	Colour	Item No.
40	200	17,0	50	Grey	2400003
50	200	22,0	50	Grey	2400028

PRODUCT INFO

- » Prevents burrowing animals
- » Upper holes for attaching to chain link fence
- » Lower holes for drainage



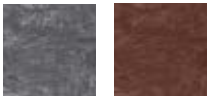


BOARD PROFILE

Standard, reinforced



Colours



4,2 x 12 cm ○ ●				
Length	Weight	Pal.	Colour	Item No.
cm	kg	Pcs.		
250	14,2	60	Grey	2500640
			Brown	2500798

End cap including screws ○ ●			
Dimensions	Weight	Colour	Item No.
W x H x D; cm	kg		
4,2 x 12 x 2	0,05	Grey	2501116
		Brown	2501118

NOTE

- » For superior strength, profiles are reinforced with rectangular galvanised steel pipe
- » Can span widths of up to 250 cm
- » Reinforced profiles have built-in expansion chambers (with lamellar plugs)
- » Ideal for permanent fences
- » Rounded edges – no risk of injury
- » When cutting boards, we recommend end caps for the cut edges





BOARD PROFILE

Standard

Colours



2 x 6 cm

Length cm	Weight kg	Pal. Pcs.	Colour	Item No.
150	1,7	260	Grey Brown	2500050 2500010

2 x 10 cm

Length cm	Weight kg	Pal. Pcs.	Colour	Item No.
80	1,5	240	Grey Brown	2500051 2500011
140	2,6	160	Grey Brown	2500052 2500012
200	3,7	160	Grey Brown	2500053 2500013
280	5,2	160	Grey Brown	2500054 2500014

2 x 20 cm

Length cm	Weight kg	Pal. Pcs.	Colour	Item No.
200	7,4	120	Grey	2500733

2,5 x 5 cm

Length cm	Weight kg	Pal. Pcs.	Colour	Item No.
300	3,5	300	Grey Brown	2500266 2500267



2,5 x 12 cm

Length cm	Weight kg	Pal. Pcs.	Colour	Item No.
80	2,3	200	Grey Brown	2500058 2500018
140	3,9	120	Grey Brown	2500059 2500019
200	5,5	120	Grey Brown	2500060 2500020
280	7,9	120	Grey Brown	2500061 2500021

3 x 6 cm

Length cm	Weight kg	Pal. Pcs.	Colour	Item No.
80	1,3	400	Grey Brown	2500062 2500022
140	2,3	260	Grey Brown	2500315 2500313
200	3,3	260	Grey Brown	2500316 2500314
280	4,7	260	Grey Brown	2500262 2500004

3 x 10 cm

Length cm	Weight kg	Pal. Pcs.	Colour	Item No.
80	2,2	240	Grey Brown	2500066 2500025
140	3,9	160	Grey Brown	2500107 2500104
200	5,6	160	Grey Brown	2500096 2500105
280	7,8	160	Grey Brown	2500108 2500095

APPLIES TO ALL BOARD PROFILES

With hanit® products, dimensions (up to 3%) and colour can vary.

Take the temperature related length fluctuations during installation (up to +/- 1.5%) into account and enquire about the maximum span.

3 × 20 cm				
Length cm	Weight kg	Pal. Pcs.	Colour	Item No.
300	16,7	60	Grey	2500727

3,5 × 12 cm				
Length cm	Weight kg	Pal. Pcs.	Colour	Item No.
80	3,2	200	Grey Brown	2500070 2500028
140	5,5	120	Grey Brown	2500071 2500029
200	7,8	120	Grey Brown	2500072 2500030
280	10,9	120	Grey Brown	2500073 2500031

3,5 × 13,5 cm				
Length cm	Weight kg	Pal. Pcs.	Colour	Item No.
80	3,6	180	Grey Brown	2500074 2500032
140	6,3	120	Grey Brown	2500109 2500115
200	9,0	120	Grey Brown	2500106 2500116
280	12,6	120	Grey Brown	2500097 2500114

4 × 8 cm				
Length cm	Weight kg	Pal. Pcs.	Colour	Item No.
80	2,4	180	Grey Brown	2500077 2500035
140	4,2	120	Grey Brown	2500185 2500186
200	6,0	120	Grey Brown	2500121 2500243
280	8,4	120	Grey Brown	2500002 2500003

4,5 × 10,5 cm				
Length cm	Weight kg	Pal. Pcs.	Colour	Item No.
80	3,5	150	Grey Brown	2500080 2500038
140	6,2	120	Grey Brown	2500245 2500252
200	8,9	120	Grey Brown	2500247 2500246
280	12,4	120	Grey Brown	2500178 2500179

5 × 12 cm				
Length cm	Weight kg	Pal. Pcs.	Colour	Item No.
80	4,5	150	Grey Brown	2500086 2500044
140	7,8	90	Grey Brown	2500250 2500248
200	11,1	90	Grey Brown	2500251 2500249
280	15,6	90	Grey Brown	2500173 2500172

5 × 20 cm				
Length cm	Weight kg	Pal. Pcs.	Colour	Item No.
300	27,9	40	Grey	2520208

6 × 12 cm				
Length cm	Weight kg	Pal. Pcs.	Colour	Item No.
80	5,4	150	Grey Brown	2500090 2500047
140	9,4	90	Grey Brown	2500093 2500177
200	13,4	90	Grey Brown	2500174 2500163
280	18,8	90	Grey Brown	2500159 2500160



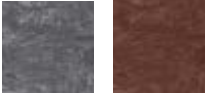


BOARD PROFILE

With tongue and groove



Colours



3 × 12,5 cm

Length cm	Weight kg	Pal. Pcs.	Colour	Item No.
140	4,9	120	Grey Brown	2600027 2600032
200	7,0	120	Grey Brown	2600028 2600033
280	9,8	120	Grey Brown	2600029 2600034

3,4 × 14,7 cm

Length cm	Weight kg	Pal. Pcs.	Colour	Item No.
305	13,2	90	Grey	2601074

4,2 × 20 cm

Length cm	Weight kg	Pal. Pcs.	Colour	Item No.
250	19,5	60	Grey Brown	2600215 2600216

4,5 × 12 cm

Length cm	Weight kg	Pal. Pcs.	Colour	Item No.
200	10,0	90	Grey Brown	2600022 2600012
280	14,0	90	Grey Brown	2600025 2600026



BOARD PROFILE

Reinforced tongue and groove



Colours



4,2 × 20 cm

Length cm	Weight kg	Pal. Pcs.	Colour	Item No.
250	24,2	60	Grey Brown	2600048 2600047

APPLIES TO ALL BOARD PROFILES

With hanit® products, dimensions (up to 3%) and colour can vary.

Take the temperature related length fluctuations during installation (up to +/- 1.5%) into account and enquire about the maximum span.



STALL BOARD

With tongue and groove



Colours



2,8 × 13 cm <input type="radio"/> <input checked="" type="radio"/>				
Length	Weight	Pal.	Colour	Item No.
cm	kg	Pcs.		
280	9,5	120	Grey	2600213
			Brown	2600214

3,8 × 13 cm <input type="radio"/> <input checked="" type="radio"/>				
Length	Weight	Pal.	Colour	Item No.
cm	kg	Pcs.		
280	13,0	120	Grey	2600209
			Brown	2600210



NOTE

With a board width of 13 cm, it takes approx. 7.7 boards to make a running metre.

Please refer to the installation recommendations and the corresponding data sheet. These can be found on our website www.hanit.de and downloaded from the selected product page.





FENCING AND BARRIERS

The best choice!

Conditions outside are tough. Cold, damp, heat, UV and pollution all take their toll on traditional materials. Metal rusts, concrete weathers and wood decays.

None of these problems affect hanit®. It doesn't need to be replaced, repaired or maintained. Over the lifetime of the product, our posts, piles and fencing represent excellent value for money.

- » Weather resistant
- » High breaking strength
- » Easy processing
- » Maintenance-free
- » Systems with extensive accessories

AGRICULTURE



PASTURE



URBAN APPLICATIONS



PRIVACY FENCE



Posts and cross-profile stakes

- » Round posts S. 40– 42
- » Round posts, reinforced S. 43
- » Square posts S. 44
- » Square posts, reinforced S. 45
- » Square profile, bevelled edges and reinforced.. S. 45
- » Cross-profile stakes S. 45

Bollards

- » Diamond head bollard S. 46
- » Pyramid head bollard S. 47
- » Dome shaped bollard S. 48

Fence construction and barriers

- » Pales and posts S. 49
- » Pasture fence S. 50– 51
- » Paddock gate S. 52
- » Handrail systems S. 53– 54
- » Barriers S. 55
- » Railing components S. 55

View protection

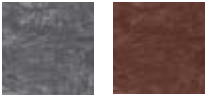
- » Privacy fence S. 56



ROUND POST

When it needs to last

Colours



Ø 4,5 cm				
Length cm	Weight kg	Pal. Pcs.	Colour	Item No.
85	1,3	300	Grey Brown	3000083 3000148
130	1,9	165	Grey Brown	3000084 3000027
150	2,2	165	Grey Brown	3000085 3000028
175	2,6	165	Grey Brown	3000008 3000003

Ø 6 cm				
Length cm	Weight kg	Pal. Pcs.	Colour	Item No.
150	3,9	125	Grey Brown	3000089 3000032
175	4,6	125	Grey Brown	3000090 3000033
200	5,3	125	Grey Brown	3000091 3000034



TIPS & TRICKS

- » hanit® round posts are as easy to work with as wood
- » For electric fence insulators, pre-drill the post and screw in
- » Easily cut to an angle
- » Signs and notices can be easily attached with screws

Please refer to the installation recommendations and the corresponding data sheet. These can be found on our website www.hanit.de and downloaded from the selected product page.



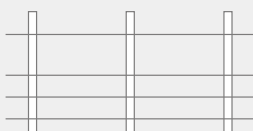


Ø 8 cm				
Length cm	Weight kg	Pal. Pcs.	Colour	Item No.
175	8,2	60	Grey Brown	3000104 3000046
200	9,3	60	Grey Brown	3000106 3000047
225	10,5	60	Grey Brown	3000108 3000048
250	11,7	60	Grey Brown	3000109 3000049
280	13,1	60	Grey Brown	3000011 3000006

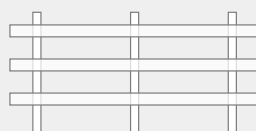
Ø 10 cm				
Length cm	Weight kg	Pal. Pcs.	Colour	Item No.
175	11,9	33	Grey Brown	3000117 3000057
200	13,7	33	Grey Brown	3000118 3000058
230	15,9	33	Grey Brown	3000120 3000060
250	17,4	33	Grey Brown	3000122 3000062
280	19,5	33	Grey Brown	3000125 3000064

RECOMMENDED FENCE HEIGHTS

Fence with posts and four wires



Fence with posts and three bars / rails



- » When choosing post lengths, follow the general rule: 1/3 below ground, 2/3 above ground.
- » For taller posts, use larger post diameters / dimensions.

Our recommended fence heights and types vary depending on the type of animal:

Animal	No. wires / bars	Height approx. in cm
Cows	2	60 / 90
Beef cattle and suckler cows	3	45 / 75 / 105
Small horses and ponies ¹	3	45 / 75 / 120
Horses ¹	3	60 / 100 / 140
Sheep and goats ¹	5	15 / 30 / 50 / 65 / 90
Poultry ²	4	20 / 40 / 60 / 85
Pigs	4	15 / 30 / 50 / 70

¹ Height may have to be adjusted according to how high the animals can jump.
² Height may have to be adjusted according to flight ability.

The heights and recommendations above are a rough guide. Every fence should be given individual consideration.



Ø 12 cm ○ ●				
Length cm	Weight kg	Pal. Pcs.	Colour	Item No.
175	16,9	28	Grey Brown	3000130 3000069
200	19,5	28	Grey Brown	3000131 3000070
225	22,0	28	Grey Brown	3000132 3000071
250	24,7	28	Grey Brown	3000133 3000072
280	28,0	28	Grey Brown	3000012 3000007

Ø 15 cm ○ ●				
Length cm	Weight kg	Pal. Pcs.	Colour	Item No.
200	29,8	30	Grey Brown	3000140 3000079
225	34,0	30	Grey Brown	3000141 3000080
250	38,0	30	Grey Brown	3000142 3000081
280	43,0	30	Grey Brown	3000143 3000082

NOTE

We offer piles with a diameter of 20 cm and a length of up to 600 cm. Further information about this product can be found in chapter 3 on page 64.

Please refer to the installation recommendations and the corresponding data sheet. These can be found on our website www.hanit.de and downloaded from the selected product page.





ROUND POST, REINFORCED

Even stronger, even better



Colours



Ø 8 cm				
Length cm	Weight kg	Pal. Pcs.	Colour	Item No.
200	10,6	60	Grey	3000193
			Brown	3000197
225	12,0	60	Grey	3000196
			Brown	3000198
250	13,3	60	Grey	3000021
			Brown	3000018
275	14,5	60	Grey	3000022
			Brown	3000019
290	15,3	60	Grey	3000023
			Brown	3000020

Ø 8 cm, with bevel (as brace)				
Length cm	Weight kg	Pal. Pcs.	Colour	Item No.
250	13,3	60	Grey	3000024
			Brown	3000015
275	14,5	60	Grey	3000025
			Brown	3000016



TECHNICAL DATA OF REINFORCEMENT

Steel tubing: S235

Diameter: approx. 26.9 mm

Wall thickness: approx. 2 mm

To accommodate the different expansion rates of steel and recycled plastic, our reinforced profiles have a built-in expansion chamber that is closed with a plug.

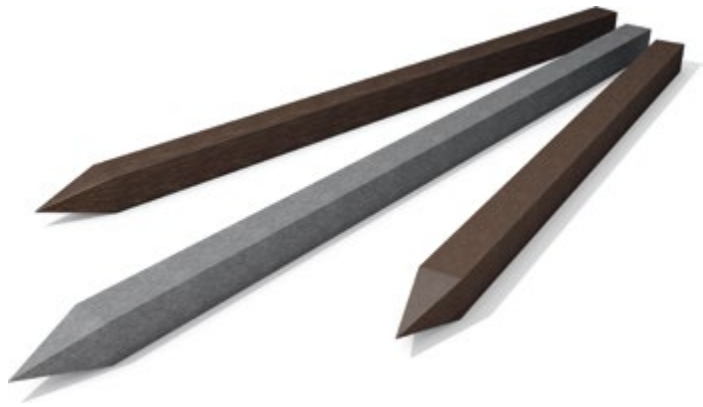
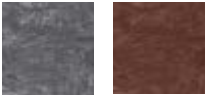




SQUARE POST

Multi-purpose

Colours



7 × 7 cm ○ ●				
Length cm	Weight kg	Pal. Pcs.	Colour	Item No.
100	4,5	121	Grey Brown	3200041 3200047
150	6,8	55	Grey Brown	3200038 3200049
175	8,0	55	Grey Brown	3200043 3200050
200	9,1	55	Grey Brown	3200039 3200033

9 × 9 cm ○ ●				
Length cm	Weight kg	Pal. Pcs.	Colour	Item No.
100	6,8	130	Grey Brown	3200021 3200005
125	8,7	45	Grey Brown	3200022 3200006
150	10,7	45	Grey Brown	3200023 3200007
175	12,6	45	Grey Brown	3200024 3200008
200	14,5	45	Grey Brown	3200025 3200009
225	16,4	45	Grey Brown	3200026 3200010
250	18,8	45	Grey Brown	3200028 3200012
280	21,1	45	Grey Brown	3200029 3200013



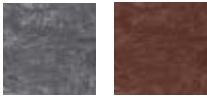


SQUARE POST, REINFORCED

The especially sturdy one



Colours



9 x 9 cm				
Length cm	Weight kg	Pal. Pcs.	Colour	Item No.
200	15,8	45	Grey Brown	3200075 3200078
225	17,9	45	Grey Brown	3200074 3200079
250	20,0	45	Grey Brown	3200076 3200080
275	22,1	45	Grey Brown	3200077 3200081
290	22,9	45	Grey Brown	3200068 3200082



TECHNICAL DATA OF REINFORCEMENT

Steel tubing: S235

Diameter: approx. 26.9 mm

Wall thickness: approx. 2 mm

To accommodate the different expansion rates of steel and recycled plastic, our reinforced profiles have a built-in expansion chamber that is closed with a plug.



SQUARE PROFILE

Bevelled edges and reinforced

Colours



9 x 9 cm, without point				
Length cm	Weight kg	Pal. Pcs.	Colour	Item No.
240	20,6	45	Brown	2300749



CROSS-PROFILE STAKE

With point



Colours



7 x 7 cm				
Length cm	Weight kg	Pal. Pcs.	Colour	Item No.
150	2,8	120	Grey	3400005
175	3,3	120	Grey	3400006
200	3,7	120	Grey	3400007





DIAMOND HEAD BOLLARD

Hollow profile, with or without reflectors

Colours



14 x 14 cm, without reflector strips

Height cm	Weight kg	Pal. Pcs.	Colour	Item No.
140	17,0	48	Brown	3500045
			Black	3500048

14 x 14 cm, with 2 reflector strips

Height cm	Weight kg	Pal. Pcs.	Colour	Item No.
140	17,0	48	Brown	3500046
			Black	3500049

INFO

The bollards are available with or without reflector strips. Only the bollards with the reflector strips are routed.

Strip at top: 1.5 cm, red
Strip at bottom: 1.5 cm, white





PYRAMID HEAD BOLLARD

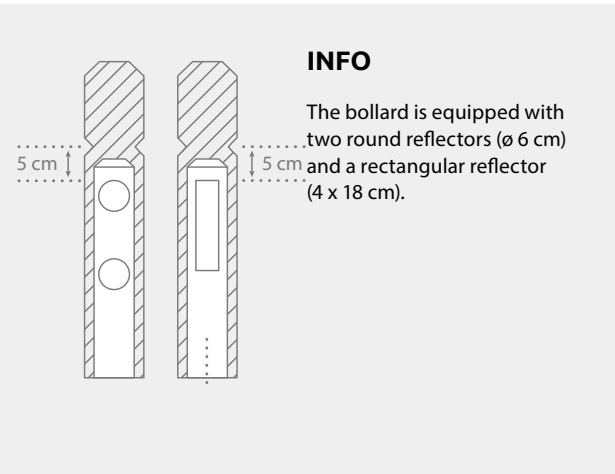
Hollow profile, with reflectors

Colours



12 x 12 cm, including reflectors

Height cm	Weight kg	Pal. Pcs.	Colour	Item No.
160	13,9	49	Brown	3500059





DOME SHAPED BOLLARD

Hollow profile, with or without reflectors

Colours

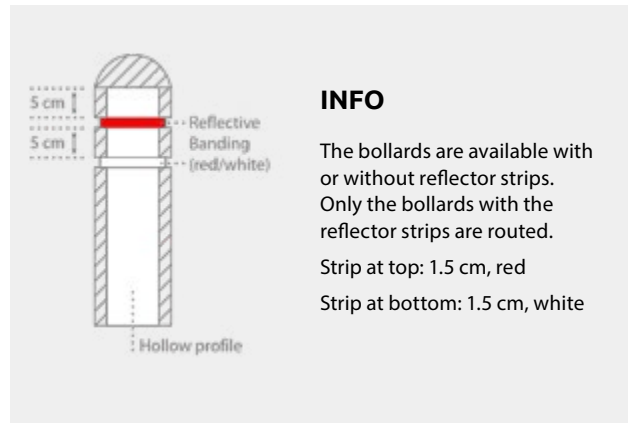


Ø 15 cm, without reflector strips

Height cm	Weight kg	Pal. Pcs.	Colour	Item No.
150	14,0	30	Grey	3500050
			Brown	3500051

Ø 15 cm, with 2 reflector strips

Height cm	Weight kg	Pal. Pcs.	Colour	Item No.
150	14,0	30	Grey	3500052
			Brown	3500053



INFO

The bollards are available with or without reflector strips. Only the bollards with the reflector strips are routed. Strip at top: 1.5 cm, red Strip at bottom: 1.5 cm, white

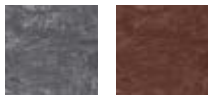




PALE AND POST

With rounded head

Colours



2 x 6 cm ○ ●			
Height cm	Weight kg	Colour	Item No.
60	0,7	Grey	3600044
		Brown	3600016
80	0,9	Grey	3600045
		Brown	3600017
100	1,1	Grey	3600046
		Brown	3600018
120	1,3	Grey	3600047
		Brown	3600019
150	1,7	Grey	3600048
		Brown	3600020

3 x 10 cm ○ ●			
Height cm	Weight kg	Colour	Item No.
60	1,7	Grey	3600050
		Brown	3600021
80	2,2	Grey	3600051
		Brown	3600022
100	2,8	Grey	3600124
		Brown	3600023
120	3,3	Grey	3600052
		Brown	3600024
150	4,2	Grey	3600053
		Brown	3600025

9 x 9 cm ○ ●			
Height cm	Weight kg	Colour	Item No.
100	7,5	Grey	3600039
		Brown	3600011
125	9,4	Grey	3600040
		Brown	3600012
150	11,2	Grey	3600041
		Brown	3600013
175	13,2	Grey	3600042
		Brown	3600014
200	15,0	Grey	3600043
		Brown	3600015

NOTE

Calling all DIYers! We don't just do bulk orders. We can supply single pales, posts, or panels to fit existing fence dimensions. This makes it easy to replace rotten wood or rusty metal with maintenance-free hanit®.

Recycled plastic profiles can be used as cross-bars but they are not always the right choice. Please contact HAHN for advice.





PASTURE FENCE

Ingeniously simple and simply robust

Colours

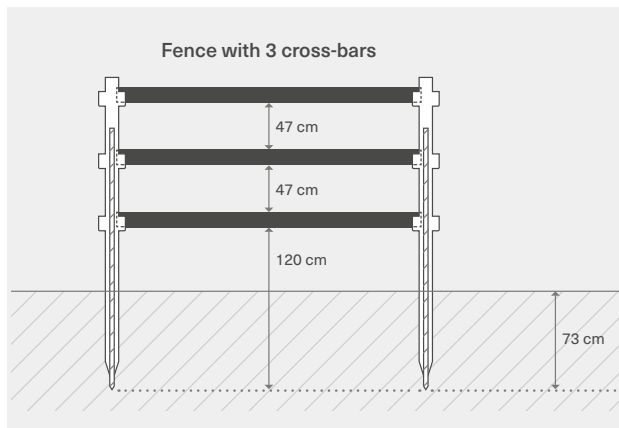


Field post 11 x 10 cm, reinforced			
Length cm	Weight kg	Colour	Item No.
230	26,2	Brown	3700003

End post 11 x 10 cm, reinforced			
Length cm	Weight kg	Colour	Item No.
230	24,7	Brown	3700032

PRODUCT INFO

- » **Cross-bar reinforcement**
Material: rectangular tubing, zinc-coated, S235
Section: 50 x 20 mm; Wall thickness: approx. 2.0 mm
- » **Post reinforcement**
Material: steel tubing, zinc-coated, S235
Diameter: approx. 42.4 mm; Wall thickness: approx. 2.5 mm



NOTE

- » Delivery includes screws for securing of cross-bars (quantity is dependent on the number of recesses)
- » Please refer to the installation recommendations, data sheet, and assembly instructions. These can be found on our website www.hanit.de and downloaded from the selected product page.
- » In cases of cross-bars being cut and where they will not be installed in the recesses, we recommend covering the cut edges with our covering cap for a safe and permanent closure.



Cross-bar 4,2 x 12 cm, reinforced

Length cm	Weight kg	Colour	Item No.
250	14,2	Brown	2500798

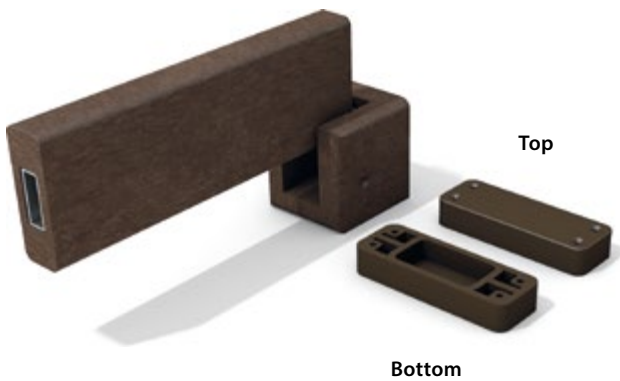
Connector right-angled 10 x 11 cm¹

Length cm	Weight kg	Colour	Item No.
11	0,8	Brown	3700052

End cap incl. assembly materials

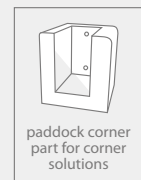
Dimensions W x H x D; cm	Weight kg	Colour	Item No.
4,2 x 12 x 2	0,05	Brown	2501118

¹ Delivery including assembly materials



PRODUCT INFO

- » **Corners for end posts**
Corners made easy! Simply attach corner pieces to an end post to create a right-angle.
- » **Universal paddock corner**
With our universal paddock corner you can create corners other than the standard 90°. Contact us for more information.



Please refer to the installation recommendations, data sheet, and assembly instructions. These can be found on our website www.hanit.de and downloaded from the selected product page.



PADDOCK GATE

Suitable for the pasture fence system

Colours



Gate single wing

Width ¹ cm	Height ² cm	Weight kg	Colour	Item No.
105	150	79,5	Brown	3700025
180	150	89,5	Brown	3700023

Gate double wing

Width ¹ cm	Height ² cm	Weight kg	Colour	Item No.
360	150	186,0	Brown	3700034

Gate post connector³

Width cm	Height cm	Weight kg	Colour	Item No.
10	11	0,8	Brown	3700020

PRODUCT INFO

- » **Gate posts**
Material: steel tubing, zinc-coated, S235
Section: 120 x 120 x 2,500 mm
Wall thickness: approx. 4 mm
Gate posts come with pre-installed hinges and have five mounting points (on two sides) for attaching gates. Unused mounting points should be closed with screws.
- » **Cross-bar mount**
Used for mounting cross-bars on to gate posts.
The components above come with fixings and and/or screws.

¹ Width gate wing

² Height above ground after installation

³ Delivery including assembly materials



NOTE

- » Please refer to the installation recommendations, data sheet, and assembly instructions. These can be found on our website www.hanit.de and downloaded from the selected product page.



HANDRAIL SYSTEM MAXI

Support provided by flexible
protection system

Colours



Support post round Ø 12 cm			
Length cm	Weight kg	Colour	Item No.
150	15,8	Brown	1100055

Cross-bar round Ø 12 cm, reinforced			
Length cm	Weight kg	Colour	Item No.
250	29,0	Brown	3700021
280	32,0	Brown	3700029

Installation kit for one cross-bar ¹		
	Weight kg	Item No.
	1,0	3700047

¹ Not Blue Angel eco-label certified



PRODUCT INFO

- » Cross-bar reinforcement:
Material: Steel tubing, galvanised, S235
Diameter: approx. 42.4 mm
Wall thickness: approx. 2.5 mm
- » When used as a railing, be sure to follow any relevant regulations.





HANDRAIL SYSTEM EASY

Quick assembly due to plug-in-system



Colours



Field post Ø 15 cm			
Length	Weight	Colour	Item No.
cm	kg		
150	23,2	Brown	3700042

Cross-bar round Ø 8 cm			
Length	Weight	Colour	Item No.
cm	kg		
225	12,0	Brown	3700006

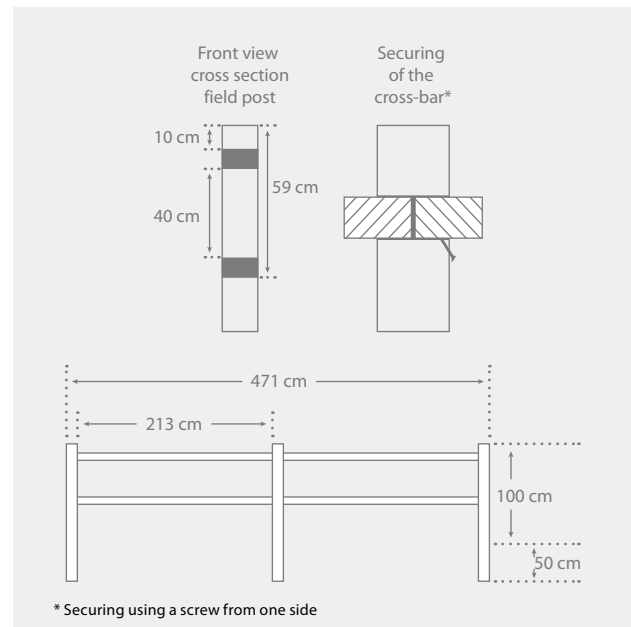
PRODUCT INFO



- » Cross-bar reinforcement:
Material: Steel tubing, S235
Diameter: approx. 26.9 mm
Wall thickness: approx. 2 mm
- » When used as a railing, be sure to follow any relevant regulations.

To accommodate the different expansion rates of steel and recycled plastic, our reinforced profiles have a built-in expansion chamber which is closed with a plug.

Please refer to the installation recommendations and the corresponding data sheet. These can be found on our website www.hanit.de and can be downloaded from the selected product page.





BARRIER

Bevelled at each end

Colours



Complete kit (2 x support post, 1 x cross-bar reinforced, Ø 12 cm)

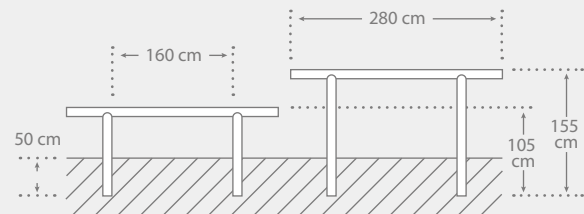
Height cm	Length cm	Weight kg	Colour	Item No.
55 ¹ /105 ²	280	52,0	Brown	3800005
105 ¹ /155 ²	280	63,1	Brown	3800007

¹ Height after installation ² Total height



NOTE

The saddle top posts are concreted into place about 50 cm deep with an inside spacing of 160 cm; the cross-member is placed onto these. Next, the cross-members and posts are bolted into place from underneath.



RAILING COMPONENTS

Almost as good as new

Cross-bar 4.2 x 12.0 cm, reinforced

Length cm	Weight kg	Colour	Item No.
260	14,6	Brown	2500399

Cross-bar round Ø 12 cm, reinforced

Length cm	Weight kg	Colour	Item No.
250	29,0	Brown	3700021



Colours



NOTE

Railings made from steel and wood are often found in parks and parking areas. The steel frame/structure can last for many years but the wooden components soon need replacing or repairing.

Using hanit® to repair and replace old wood works like a maintenance-free upgrade. Round profiles are great for handrails and the board profiles work best as knee rails.

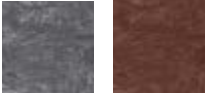
For maximum compatibility, our profiles come in the most commonly used sizes.



PRIVACY FENCE

Versatile and multi-purpose

Colours



Field post 16 × 12 cm, reinforced

Length cm	Weight kg	Colour	Item No.
250	42,2	Brown	4000005

Corner post 16 × 12 cm, reinforced

Length cm	Weight kg	Colour	Item No.
250	42,0	Brown	4000006

End post 16 × 12 cm, reinforced

Length cm	Weight kg	Colour	Item No.
250	46,0	Brown	4000007

Centre support Ø 10 cm, grooved

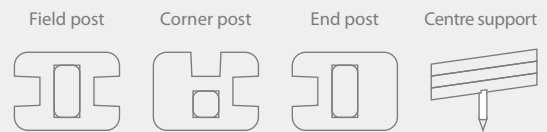
Length cm	Weight kg	Colour	Item No.
50	2,6	Brown	4000008

Tongue and groove boards 3,8 cm Thickness, 13 cm Width

Length cm	Weight kg	Colour	Item No.
190	8,7	Grey	2600521
		Brown	2600522

NOTE

Panel, corner and end posts are all supplied with end caps.
 Number of tongue & groove boards per section: 15 pieces
 Please refer to the installation recommendations and the corresponding data sheet. These can be found on our website www.hanit.de and can be downloaded from the selected product page.







GROUNDWORK AND SURFACES

For the love of dry feet!

When grass, rain and people come together, you're going to get mud. For cases like these, we recommend our ground cover. Whether for campsites, riding arenas, car parks, exhibition sites, beer tents or construction sites, we have the right solution for you. Our footpath planks, decking boards, paddock slabs, hexagonal eco slabs and Hanpave™ will keep you on solid ground. All our products are robust and lightweight.

We make our decking, paving and slabs from heavy-duty hanit®. It's suitable for practically any purpose and can be laid quickly thanks to our effective linking system. Even large areas can be covered quickly and if used for temporary purposes, it can be removed just as easily.

- » Strong enough for heavy-duty use
- » Quick and easy to install
- » Can be used as temporary or permanent installations
- » Lightweight
- » Low transport costs due to high loading capacity

FOOTBRIDGES, BOARDWALKS AND PATHS**BEACH AND DUNE PATHS****TERRACES, PATIOS AND DECKS****PARKING AREAS AND DRIVEWAYS****Footpath planks and decking**

- » Footpath planks with tongue and groove (with or without reinforcement) S. 60
- » Footpath planks standard (with or without reinforcement).....S. 61 – 63
- » Pile..... S. 64
- » Decking S. 65
- » Pre-assembled boardwalk element S. 66

Ground reinforcement

- » Eco slabs S. 66
- » Hanpave..... S. 67
- » Paddock slab..... S. 68
- » INB Paddock slab S. 69
- » Heavy duty ground grid S. 70
- » Paving stone S. 71



FOOTPATH PLANK

With tongue and groove

Colours



4 x 17 cm				
Length cm	Weight kg	Pal. Pcs.	Colour	Item No.
100	6,3	75	Grey	4100231
			Brown	4100297
150	8,8	75	Grey	4100230
			Brown	4100296
200	11,8	75	Grey	4100229
			Brown	4100233
250	14,7	75	Grey	4100113
			Brown	4100232
300	17,7	75	Grey	4100117
			Brown	4100112

4 x 17 cm, reinforced				
Length cm	Weight kg	Pal. Pcs.	Colour	Item No.
100	7,4	75	Grey	4100298
			Brown	4100305
150	11,2	75	Grey	4100299
			Brown	4100304
200	14,9	75	Grey	4100300
			Brown	4100303
250	18,6	75	Grey	4100301
			Brown	4100302
300	22,4	75	Grey	4100153
			Brown	4100154

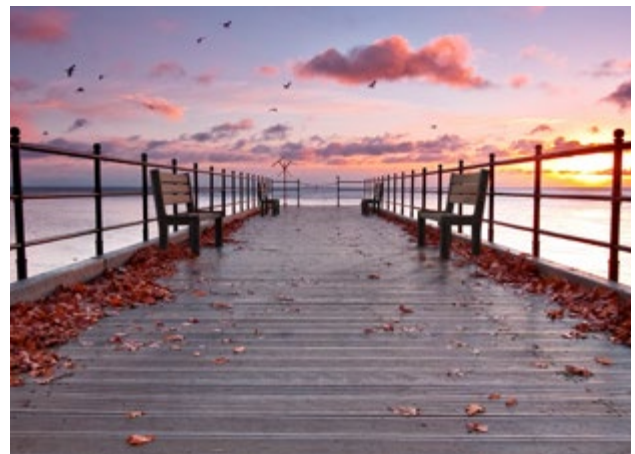
APPLICABLE FOR hanit® FOOTPATH PLANKS

Surface:
Grooved profile slip rating R1

Testing:
BGF-Testing in accordance with ZH1/571 and DIN 51130

Note expansion/contraction due to temperature fluctuations (up to +/- 1.5%) during installation.

The material is recycled plastic. Variation in the surface quality is not always be avoidable.



OVERVIEW OF SPANS

Floor surface			
Footpath plank (cm)	Material	Surface load: 3 kN/m ²	Surface load: 5 kN/m ²
		Concentrated load: 1,5 kN	Concentrated load: 2 kN
4.0 x 17.0 ¹	hanit®	*60 cm	60 cm
4.0 x 17.0 reinforced ¹	hanit®	*100 cm	*100 cm
4.0 x 19.7	hanit®	53 cm	46 cm
4.0 x 19.7 reinforced	hanit®	*80 cm	80 cm
4.8 x 16.5	hanit®	*60 cm	56 cm
4.8 x 16.5 reinforced	hanit®	*80 cm	80 cm
6.0 x 19.7	hanit®	*80 cm	80 cm
6.0 x 19.7 reinforced	hanit®	*100 cm	100 cm

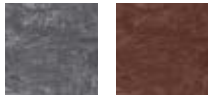
¹ Two footpath planks each measuring 4.0 x 17.0 cm with tongue and groove were tested in combination | * Maximum span due to the creep properties



FOOTPATH PLANK

Without tongue and groove

Colours

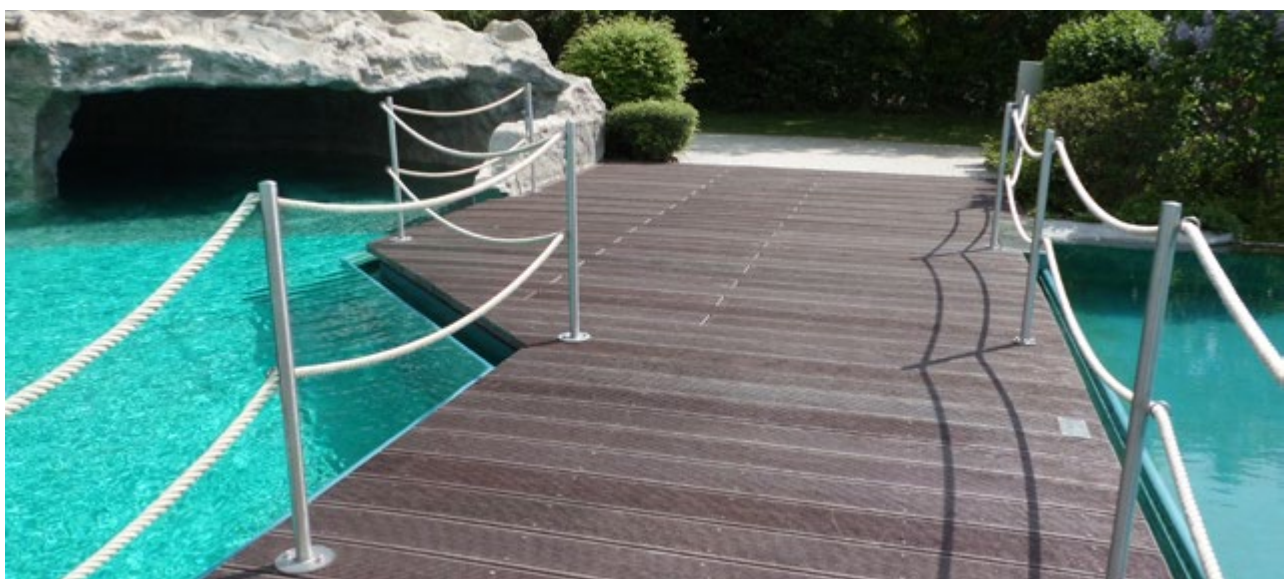


4 x 19,7 cm				
Length cm	Weight kg	Pal. Pcs.	Colour	Item No.
100	7,3	120	Grey	4100239
			Brown	4100243
150	11,0	60	Grey	4100240
			Brown	4100244
200	14,7	60	Grey	4100241
			Brown	4100245
250	18,3	60	Grey	4100242
			Brown	4100246
300	21,2	60	Grey	4100172
			Brown	4100247

4 x 19,7 cm, reinforced				
Length cm	Weight kg	Pal. Pcs.	Colour	Item No.
100	8,4	120	Grey	4100248
			Brown	4100253
150	12,6	60	Grey	4100249
			Brown	4100254
200	16,9	60	Grey	4100250
			Brown	4100255
250	21,0	60	Grey	4100251
			Brown	4100256
300	25,2	60	Grey	4100252
			Brown	4100257

NOTE

- » HAHN boards, square profiles, posts and beams will never rot and can be used with virtually any substructure design. Take a look at chapter 1 'Building and Construction' or contact us for expert advice.
- » Please refer to the installation recommendations, data sheet, and assembly instructions. These can be found on our website www.hanit.de and downloaded from the selected product page.





4,8 x 16,5 cm				
Length cm	Weight kg	Pal. Pcs.	Colour	Item No.
100	7,3	75	Grey Brown	4100213 4100217
150	11,0	75	Grey Brown	4100214 4100218
200	14,7	75	Grey Brown	4100215 4100219
250	18,4	75	Grey Brown	4100216 4100220
300	21,4	65	Grey Brown	4100143 4100142

4,8 x 16,5 cm, reinforced				
Length cm	Weight kg	Pal. Pcs.	Colour	Item No.
100	8,5	75	Grey Brown	4100221 4100225
150	12,8	75	Grey Brown	4100222 4100226
200	17,0	75	Grey Brown	4100223 4100227
250	21,3	75	Grey Brown	4100224 4100228
300	25,5	65	Grey Brown	4100151 4100152



**OPTIONAL:
RETROFITTED REINFORCEMENT**

- » Flat steel: 6 x 25 mm, galvanised
- » Centered on the underside. Ends approx. 7 cm before end of profile
- » Flat steel fixed with clips
- » Double reinforcement available on request
- » For footpath planks 6.0 x 19.7 cm stronger reinforcement for increased spans available on request





6 × 19,7 cm				
Length cm	Weight kg	Pal. Pcs.	Colour	Item No.
100	11,0	80	Grey Brown	4100258 4100261
150	16,5	40	Grey Brown	4100259 4100262
200	22,0	40	Grey Brown	4100235 4100263
250	27,5	40	Grey Brown	4100260 4100264
300	32,2	40	Grey Brown	4100234 4100265

6 × 19,7 cm, reinforced				
Length cm	Weight kg	Pal. Pcs.	Colour	Item No.
100	12,1	80	Grey Brown	4100266 4100271
150	18,1	40	Grey Brown	4100267 4100272
200	24,2	40	Grey Brown	4100268 4100273
250	30,2	40	Grey Brown	4100269 4100274
300	36,2	40	Grey Brown	4100270 4100275

TIPS & TRICKS

- » For seasonal installation:
Made to measure (length, width, height) pre-assembled boardwalk elements guarantee quick installation in spring and if required, swift storage in the winter months.
- » Ready-assembled footpath sections consist of boards pre-installed on to beams.
- » The beams are positioned so that each section pushes together easily.
- » It's even quicker and easier when using our ready made boardwalk elements in standard dimensions (more on page 66).





PILE

Solid, stable support

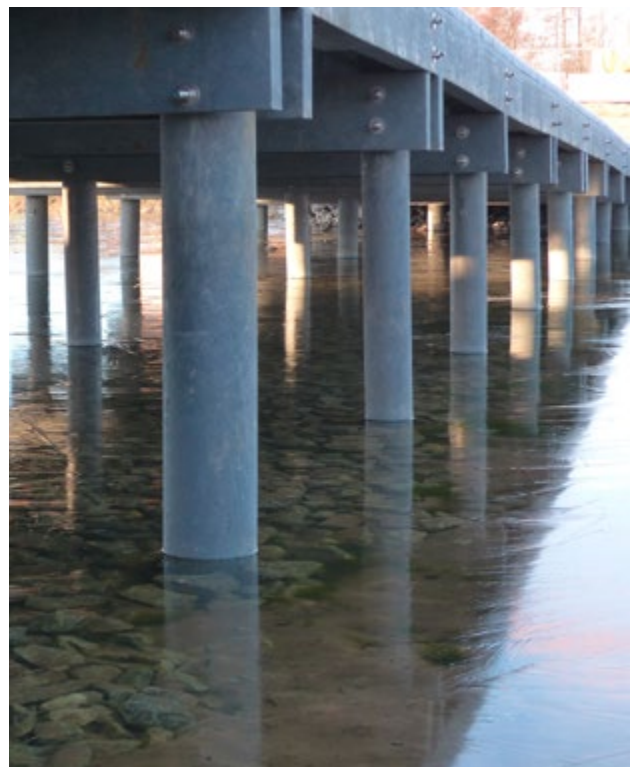
Colours



Ø 20 cm				
Length cm	Weight kg	Pal. Pcs.	Colour	Item No.
200	51,0	16	Grey	3000217
			Brown	3000208
250	66,0	16	Grey	3000242
			Brown	3000241
300	80,0	16	Grey	3000218
			Brown	3000224
350	95,0	8	Grey	3000221
			Brown	3000220
400	110,0	8	Grey	3000219
			Brown	3000225
450	124,0	8	Grey	3000215
			Brown	3000226
500	139,0	8	Grey	3000210
			Brown	3000227
550	153,0	8	Grey	3000222
			Brown	3000228
600	168,0	8	Grey	3000223
			Brown	3000229

NOTE

Piles with a diameter of 25 cm and a length of up to 600 cm are available on request.

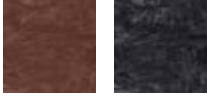




DECKING

Firm footing, every time

Colours



2,8 x 19,5 cm				
Length cm	Weight kg	Pal. Pcs.	Colour	Item No.
200	10,2	60	Brown	4100167
			Black	4100171
300	14,5	60	Brown	4100116
			Black	4100238



NOTE

- » HAHN boards, square profiles, posts and beams will never rot and can be used with virtually any substructure design. Take a look at chapter 1 'Building and Construction' or contact us for expert advice.
- » Please refer to the installation recommendations, data sheet, and assembly instructions. These can be found on our website www.hanit.de and downloaded from the selected product page.





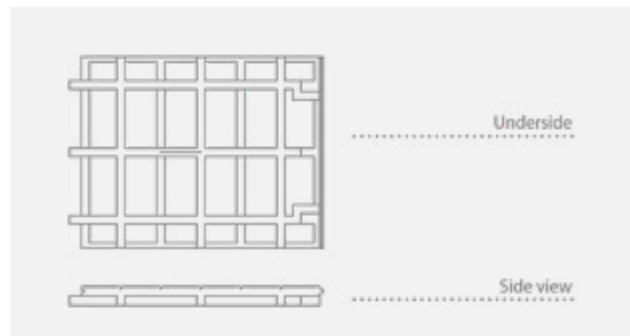
PRE-ASSEMBLED BOARDWALK ELEMENT

Click, click – done!

Colours



Length: 100 cm					
Width	Thickn.	Weight	Pal.	Colour	Item No.
cm	cm	kg	Pcs.		
100	8	34,2	10	Grey	4100291
				Brown	4100568
120	8	39,9	10	Grey	4100293
				Brown	4100474



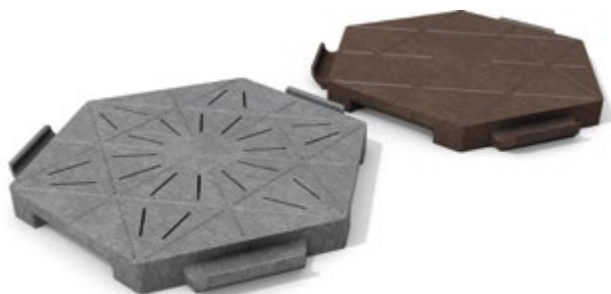
ECO SLAB

Closed or slotted

Colours



Thickness: 4 cm, slotted					
ø outer	ø inner	Weight	Pal.	Colour	Item No.
cm	cm	kg	Pcs.		
46	40	1,7	235	Grey	4200018
				Brown	4200016



Thickness: 4 cm, closed					
ø outer	ø inner	Weight	Pal.	Colour	Item No.
cm	cm	kg	Pcs.		
46	40	1,7	235	Grey	4200019
				Brown	4200017



NOTE

1 sqm: Approx. 7 slabs

1 pallet: Approx. 33.5 sqm

With ribbed structure on the underside for increased stability.

Application: Ideal for temporary use at trade fairs, exhibitions and events.



HANPAVE

Parking and Path Construction

Colours



Thickness: 4 cm					
Width	Length	Weight	Pa.	Colour	Item No.
cm	cm	kg	Pcs.		
33,3	33,3	0,5	468	Black	4200035



Marking element

Colour	Item No.
Weiß	4200041

NOTE

1 sqm:	Approx. 9 grids
1 pallet:	Approx. 56 sqm
Sealed area:	Approx. 27%
Capacity ¹ :	Approx. 0.04 m ³ per sqm
Load capacity:	250 tons per sqm
Application:	Ideal for drives, parking areas, access roads and paths.

Please refer to the installation recommendations and the corresponding data sheet. These can be found on our website www.hanit.de and downloaded from the selected product page.

¹ Up to upper edge of product





PADDOCK SLAB

Agriculture and Livestock Management

Colours



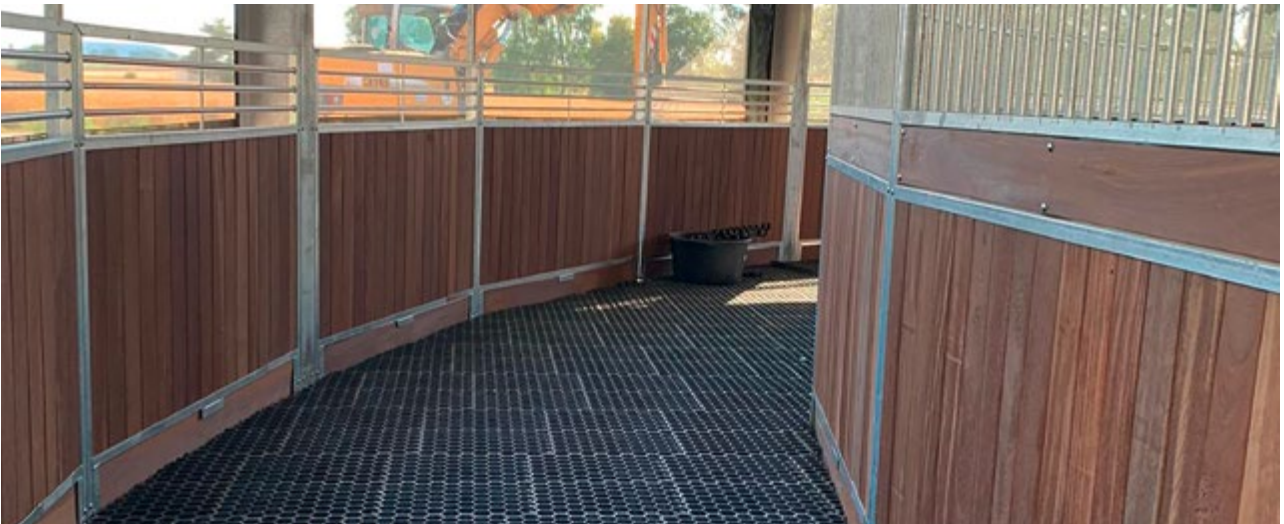
Thickness: 4 cm					
Width	Length	Weight	Pal.	Colour	Item No.
cm	cm	kg	Pcs.		
40	50	2,1	100	Black	4200028

NOTE

- 1 sqm: Approx. 5 slabs
- 1 pallet: Approx. 20 sqm
- Sealed area: Approx. 58%
- Capacity¹: Approx. 0.03 m³ per sqm
- Load capacity: SLW 60 according to DIN 1072
- Application: Ideal for paths, runouts, paddocks and feeding areas.

Please refer to the installation recommendations and the corresponding data sheet. These can be found on our website www.hanit.de and downloaded from the selected product page.

¹ Up to upper edge of product





INB PADDOCK SLAB

Stable ground without a base

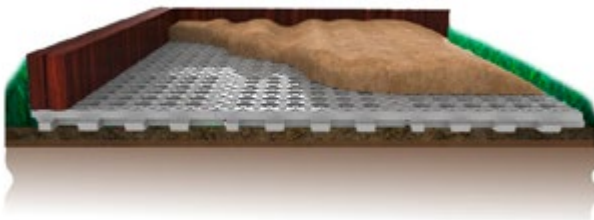


Colours



Thickness: 5,3 cm

Width cm	Length cm	Weight kg	Pa. Pcs.	Colour	Item No.
50	50	6,7	140	Grey	6000001



PRODUCT INFO

- » Structured, grained
- » Double nubbed surface
- » Plug system
- » Stable ground without a base
- » Ø of holes: 5 cm

NOTE

1 sqm:	Approx. 4 slabs
1 pallet:	Approx. 35 sqm
Sealed area:	Approx. 70%
Capacity ¹ :	Approx. 0.03 m ³ per sqm
Load capacity:	SLW 60 according to DIN 1072
Application:	Ideal for draw paths, runs, paddocks, feeding areas and riding arenas.

Please refer to the installation recommendations and the corresponding data sheet. These can be found on our website www.hanit.de and downloaded from the selected product page.

¹ Up to upper edge of product





HEAVY DUTY GROUND GRID

With connection system

Colours



Thickness: 8 cm

Width	Length	Weight	Pal.	Colour	Item No.
cm	cm	kg	Pcs.		
40	60	9,0	80	Grey	4200030



NOTE

- 1 sqm: Approx. 4.17 grids
- 1 pallet: Approx. 19 sqm
- Sealed area: Approx. 47%
- Capacity¹: Approx. 0.03 m³ per sqm
- Load capacity: SLW 60 according to DIN 1072
- Application: Ideal for parking areas with frequent HGV use.

Please refer to the installation recommendations and the corresponding data sheet. These can be found on our website www.hanit.de and downloaded from the selected product page.

¹ Up to upper edge of product





PAVING STONE

With connection system

Colours



Thickness: 6 cm

Width cm	Length cm	Weight kg	Pal. Pcs.	Colour	Item No.
50	50	8,4	60	Grey	4200038



NOTE

1 sqm:	Approx. 4 elements
1 pallet:	Approx. 15 sqm
Sealed area:	Approx. 85%
Capacity ¹ :	Approx. 0.01 m ³ per sqm
Load capacity:	SLW 60 according to DIN 1072
Application:	Ideal for path design.

Please refer to the installation recommendations and the corresponding data sheet. These can be found on our website www.hanit.de and downloaded from the selected product page.

¹ Up to upper edge of product





OUTDOOR SPACES AND FURNITURE

Like new, year after year.

Rain, hail, snow, ice, heat, UV – the outdoor life can be tough for outdoor furniture. Paint starts to peel and wood starts to split. You need to invest time and money year after year to fight the elements and keep the weather at bay.

hanit® is weather-resistant. It shrugs off the rain and isn't affected by the cold. Imagine: no more maintenance. No more mothballing in winter. Just imagine how much time and money hanit® outdoor furniture could save. Timeless aesthetics without endless expenditure.

- » No maintenance costs
- » Made for year-round use
- » Single items and full modular systems
- » For every purpose in any environment

FURNITURE



BENCH BOARDS AND ACCESSORIES



PLANTERS



RAISED BEDS



Tivoli set.....p. 74 – 75

- » Tivoli bench
- » Canetti bench
- » Tivoli table
- » Trinity table

Hyde Park set.....p. 76 – 77

- » Hyde Park bench
- » Hyde Park bench without backrest
- » Hyde Park table
- » Hyde Park bench extension module
- » Hyde Park bench connection module

Calero set.....p. 78 – 79

- » Calero bench
- » Calero table
- » Calero stool
- » Calero high table

Taurus set.....p. 80

- » Taurus forest bench
- » Taurus forest bench without backrest
- » Taurus table

Benches.....p. 81 – 90

- » Bavaria bench

- » Mira bench
- » Piccadilly bench
- » Trafalgar Square bench
- » Sutton bench
- » High Line bench
- » Ueno bench
- » Somerset bench
- » Highlands bench
- » Provence bench
- » Sapo bench
- » Sapo senior's bench
- » Tarlo senior's bench
- » Aveto sun lounger

Sets & round benches.....p. 91 – 94

- » Stelvio set
- » Serengeti set
- » Isola set
- » Gattton round bench

Special benches & youth benches.....p. 96 – 99

- » Iona bench
- » Grand Canyon shelter
- » Collodi skater bench
- » Tremezzo youth bench

Bench boards & accessories

-p. 100 – 104
- » Bench boards, classic
 - » Bench boards, premium
 - » Compact bench boards
 - » Ground anchor
 - » Armrest

Planters & composters.....p. 105 – 109

- » Muscari planter
- » Vinca planter
- » Iberis planter
- » Terra raised bed
- » Modular composter
- » Cemetery composter

Litter bins.....p. 110 – 111

- » Scori litter bin
- » Collec litter bin
- » Stora litter bin



TIVOLI SET

Ideal for any circumstances



Perfect in combination with Canetti and Trinity

TIVOLI BENCH

Tivoli bench, width: 150 cm ●

Dimensions W x H x D; cm	Weight kg	Colour	Item No.
150 x 80 x 70	69,0	Brown	4300048

Tivoli bench, width: 200 cm ● ● ● ●

Dimensions W x H x D; cm	Weight kg	Colour	Item No.
200 x 80 x 70	82,0	Brown	4300007
		Grey-Green	4300077
		Grey-Blue	4300073
		Grey-Red	4300084



CANETTI BENCH

Canetti bench, width: 150 cm ●

Dimensions W x H x D; cm	Weight kg	Colour	Item No.
150 x 45 x 35	40,0	Brown	4300049

Canetti bench, width: 200 cm ● ● ● ●

Dimensions W x H x D; cm	Weight kg	Colour	Item No.
200 x 45 x 35	49,0	Brown	4300008
		Grey-Green	4300078
		Grey-Blue	4300074
		Grey-Red	4300085



TIVOLI TABLE

Tivoli table, width: 150 cm

Dimensions W x H x D; cm	Weight kg	Colour	Item No.
150 x 75 x 70	97,0	Brown	4300061

Tivoli table, width: 200 cm

Dimensions W x H x D; cm	Weight kg	Colour	Item No.
200 x 75 x 70	114,0	Brown	4300056
		Grey-Green	4300079
		Grey-Blue	4300075
		Grey-Red	4300086



TRINITY TABLE

Trinity one-piece tabletop is the perfect alternative to traditional slatted designs.

Trinity table, width: 200 cm

Dimensions W x H x D; cm	Weight kg	Colour	Item No.
200 x 75 x 75	111,0	Brown	4300116



PRODUCT INFO TIVOLI SET

- » Board type: Premium
 - » Tivoli bench: 5 boards 150/200 x 10 x 4.7 cm
 - » Canetti bench: 3 boards 150/200 x 10 x 4.7 cm
 - » Seat height: 45 cm
 - » Tivoli table: 5 boards 150/200 x 12 x 4.7 cm
 - » Tabletop surface Tivoli: 150/200 x 70 cm
 - » Tabletop surface Trinity: 200 x 75 cm
 - » Table height: 75 cm
- Optional accessories:**
- » Ground anchor Type 1
 - » Armrest Tivoli bench

Benches and tables are delivered as a kit. Assembly instructions and materials are included.



HYDE PARK SET

The versatile seating group



HYDE PARK BENCH

Hyde park bench, width: 165 cm

Dimensions W x H x D; cm	Weight kg	Colour	Item No.
165 x 93 x 56	77,0	Black-Brown	4300128

Hyde park bench, width: 195 cm

Dimensions W x H x D; cm	Weight kg	Colour	Item No.
195 x 93 x 56	88,0	Black-Brown	4300129



NOTE

» To be secured to the ground



HYDE PARK BENCH WITHOUT BACKREST

Hyde Park bench without backrest, width: 165 cm

Dimensions W x H x D; cm	Weight kg	Colour	Item No.
165 x 48 x 46	48,0	Black-Brown	4300131

Hyde Park bench without backrest, width: 195 cm

Dimensions W x H x D; cm	Weight kg	Colour	Item No.
195 x 48 x 46	54,0	Black-Brown	4300130



HYDE PARK TABLE

Hyde park table, width: 165 cm

Dimensions W x H x D; cm	Weight kg	Colour	Item No.
165 x 80 x 90	108,5	Black-Brown	4300143

Hyde park table, width: 195 cm

Dimensions W x H x D; cm	Weight kg	Colour	Item No.
195 x 80 x 90	123,0	Black-Brown	4300144



HYDE PARK BENCH EXTENSION MODULE

Hyde Park bench extension module, width: 155 cm

Dimensions W x H x D; cm	Weight kg	Colour	Item No.
155 x 48 x 46	41,0	Black-Brown	4300181

Hyde Park bench extension module, width: 185 cm

Dimensions W x H x D; cm	Weight kg	Colour	Item No.
185 x 48 x 46	47,0	Black-Brown	4300182



HYDE PARK BENCH CONNECTION MODULE

Hyde Park bench connection module, width: 150 cm

Dimensions W x H x D; cm	Weight kg	Colour	Item No.
150 x 5,0 x 41	35,0	Brown	4300141

Hyde Park bench connection module, width: 180 cm

Dimensions W x H x D; cm	Weight kg	Colour	Item No.
180 x 5,0 x 41	41,0	Brown	4300142



PRODUCT INFO HYDE PARK SET

- » Board type: Premium
- » Bench with backrest: 7 boards 150/180 x 10 x 4.7 cm
- » Bench without backrest: 4 boards 150/180 x 10 x 4.7 cm
- » Seat height: 45 cm
- » Table: 8 boards 150/180 x 10 x 4.7 cm
- » Tabletop surface: 90 x 165/195 cm
- » Table height: 80 cm
- » To be secured to the ground

Optional accessories:

- » Ground anchor Type 1 (benches)
- » Ground anchor Type 3 (table)

Benches and tables are delivered as a kit. Assembly instructions and materials are included.



CALERO SET

The modern set



CALERO BENCH

Calero bench, width: 150 cm ○ ● ● ● ●

Dimensions W x H x D; cm	Weight kg	Colour	Item No.
150 x 45 x 40	74,0	Grey	4300126
		Brown	4300117
		Black	4300088
		Black-Grey	4300094
		Black-Brown	4300095



CALERO TABLE

Calero table, width: 150 cm ○ ● ● ● ●

Dimensions W x H x D; cm	Weight kg	Colour	Item No.
150 x 75 x 67	158,0	Grey	4300127
		Brown	4300118
		Black	4300089
		Black-Grey	4300111
		Black-Brown	4300112



CALERO BAR The outdoor bar that lasts

Calero stool, width: 50 cm			
Dimensions W x H x D; cm	Weight kg	Colour	Item No.
50 x 80 x 38	66,0	Grey	4300158



CALERO HIGH TABLE

Calero high table, width: 150 cm			
Dimensions W x H x D; cm	Weight kg	Colour	Item No.
150 x 110 x 67	221,0	Grey	4300159



PRODUCT INFO CALERO SET

- » Bench:
4 profiles 132 x 9 x 9 cm
- » Seat height:
45 cm
- » Table:
7 profiles 132 x 9 x 9 cm
- » Tabletop surface:
67 x 150 cm
- » Table height:
75 cm
- » Stool:
4 profiles 32 x 9 x 9 cm
- » Seat height:
80 cm
- » High table:
7 profiles 132 x 9 x 9 cm
- » Tabletop surface:
67 x 150 cm
- » Table height:
110 cm

Optional accessories:

- » Ground anchor Type 1

NOTE

- » High table can also be used as a year-round work table

Benches, tables and Calero bar are delivered as a kit. Assembly instructions and materials are included.



TAUNUS SET

For the rural look



TAUNUS FOREST BENCH

Taunus forest bench, width: 200 cm			
Dimensions	Weight	Colour	Item No.
W x H x D; cm	kg		
200 x 93 x 67	147,0	Brown	4300050



TAUNUS FOREST BENCH WITHOUT BACKREST

Taunus forest bench without backrest, width: 200 cm			
Dimensions	Weight	Colour	Item No.
W x H x D; cm	kg		
200 x 45 x 41	97,7	Brown	4300051



TAUNUS TABLE

Taunus table, width: 200 cm			
Dimensions	Weight	Colour	Item No.
W x H x D; cm	kg		
200 x 75 x 68	155,0	Brown	4300062



PRODUCT INFO TAUNUS SET

- » Board type: Premium
- » Bench with backrest: 5 boards 200 x 12 x 4.7 cm
- » Bench without backrest: 3 boards 200 x 12 x 4.7 cm
- » Seat height: 45 cm
- » Table: 5 boards 200 x 12 x 4.7 cm
- » Tabletop surface: 68 x 200 cm
- » Table height: 75 cm
- » To be embedded in the ground
- » Height from the ground up

Benches and tables are delivered as a kit. Assembly instructions and materials are included.

Further information regarding installation depth and foot shape can be found on the product specification sheet at www.hanit.de



BAVARIA BENCH



Bavaria bench, width: 200 cm			
Dimensions	Weight	Colour	Item No.
W x H x D; cm	kg		
200 x 80 x 60	127,0	Brown	4300044

PRODUCT INFO

- » Board type: Compact
- » Bench with backrest:
seat board 200 x 40 x 7.5/6.5 cm
back board 200 x 27.5 x 6.5/5.5 cm
- » Seat height:
47 cm

Optional accessories:
 » Ground anchor Type 1

Bench will be delivered as a kit. Assembly instructions and materials are included.



BUILDING AND CONSTRUCTION

FENCING AND BARRIERS

GROUNDWORK AND SURFACES

OUTDOOR SPACES AND FURNITURE

PLAYGROUND FURNITURE

INDEX



MIRA BENCH



Mira bench, width: 200 cm			
Dimensions	Weight	Colour	Item No.
W x H x D; cm	kg		
200 x 47 x 40	71,0	Brown	4300046

PRODUCT INFO

- » Board type: Compact
- » Bench without backrest:
seat board 200 x 40 x 7.5/6.5 cm
- » Seat height:
47 cm

Optional accessories:
 » Ground anchor Type 1

Bench will be delivered as a kit. Assembly instructions and materials are included.





PICCADILLY BENCH

Classic and elegant

Picadilly bench, width: 150 cm			
Dimensions	Weight	Colour	Item No.
W x H x D; cm	kg		
150 x 80 x 65	74,0	Brown	4300063

Picadilly bench, width: 200 cm			
Dimensions	Weight	Colour	Item No.
W x H x D; cm	kg		
200 x 80 x 65	90,0	Brown	4300013
		Black-Brown	4300072
		Grey-Black	4300125
		Grey-Brown	4300122
		Grey-Green	4300123
		Grey-Blue	4300124
		Grey-Red	4300087



PRODUCT INFO

- » Board type: Premium
- » 5 bench boards 150/200 x 12 x 4.7 cm
- » Seat height: 45 cm

Optional accessories:

- » Ground anchor Type 2
- » Armrest

Benches and tables are delivered as a kit. Assembly instructions and materials are included.

THE PERFECT COMPLEMENT



- » Tivoli table
- See page 75



- » Trinity table
- See page 75



- » Canetti bench without backrest
- See page 74



TRAFALGAR SQUARE BENCH

Timeless design in a choice of colours



Trafalgar Square bench, width: 150 cm

Dimensions W x H x D; cm	Weight kg	Colour	Item No.
150 x 80 x 65	73,0	Brown	4300064

Trafalgar Square bench, width: 200 cm

Dimensions W x H x D; cm	Weight kg	Colour	Item No.
200 x 80 x 65	88,5	Brown	4300016
		Grey-Brown	4300147
		Black-Brown	4300149
		Grey-Green	4300148
		Grey-Blue	4300151
		Grey-Black	4300153
		Grey-Red	4300152

PRODUCT INFO

- » Board type: Premium
- » 7 bench boards 150/200 x 8 x 4.7 cm
- » Seat height: 45 cm

Optional accessories:

- » Ground anchor Type 2
- » Armrest

Benches and tables are delivered as a kit. Assembly instructions and materials are included.



THE PERFECT COMPLEMENT



- » **Tivoli table**
See page 75



- » **Trinity table**
See page 75



- » **Canetti bench without backrest**
See page 74





SUTTON BENCH

Modern shape, traditional charm



Sutton bench, width: 200 cm			
Dimensions	Weight	Colour	Item No.
W x H x D; cm	kg		
200 x 80 x 60	94,0	Brown	4300006



PRODUCT INFO

- » Board type: Premium
- » 5 bench boards 200 x 10 x 4.7 cm
- » Seat height: 45 cm

Optional accessories:

- » Ground anchor Type 1
- » Armrest

Benches and tables are delivered as a kit. Assembly instructions and materials are included.



THE PERFECT COMPLEMENT

- » Tivoli table
See page 75

- » Trinity table
See page 75

- » Canetti bench without backrest
See page 74



HIGH LINE BENCH

Where elegance has its place



High Line bench, width: 200 cm

Dimensions W x H x D; cm	Weight kg	Colour	Item No.
200 x 45 x 48	85,0	Black-Brown	4300145

Ground anchor for High Line bench

Dimensions W x H x D; cm	Weight kg	Colour	Item No.
8 x 6,6 x 5,8	1,0	Brown	4600168



PRODUCT INFO

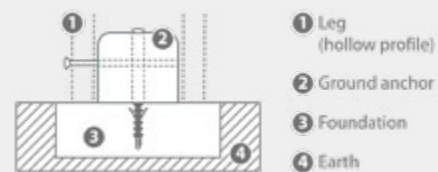
- » Board type: reinforced bench boards
- » 8 bench boards 176 x 12 x 4.2 cm
- » Seat height: 45 cm

Optional accessories:

- » **Ground anchor** High Line bench

Benches and tables are delivered as a kit. Assembly instructions and materials are included.

Outline drawing of ground anchor and mounting



UENO BENCH

Minimalist design, maximum usage



Ueno bench, width: 130 cm

Dimensions W x H x D; cm	Weight kg	Colour	Item No.
130 x 48 x 46	52,0	Black-Brown	4300155

Ueno bench, width: 180 cm

Dimensions W x H x D; cm	Weight kg	Colour	Item No.
180 x 48 x 46	70,0	Black-Brown	4300156

PRODUCT INFO

- » Board type: reinforced bench board
- » 1 bench board 117/167 x 46 x 8.0 cm
- » Seat height: 48 cm

Optional accessories:

- » **Ground anchor** Type 1

Benches and tables are delivered as a kit. Assembly instructions and materials are included.



SOMERSET BENCH

Ready to use after setting into the ground

Somerset bench, width: 200 cm

Dimensions	Weight	Colour	Item No.
W x H x D; cm	kg		
200 x 75 x 65	113,0	Brown	4300042



PRODUCT INFO

- » Board type: Premium
- » 5 bench boards 200 x 12 x 4.7 cm
- » Seat height: 45 cm
- » To be embedded in the ground
- » Height from the ground up

Benches and tables are delivered as a kit. Assembly instructions and materials are included.

Further information regarding installation depth and foot shape can be found on the product specification sheet at www.hanit.de and downloaded from the selected product page.



HIGHLANDS BENCH

A new variation of the embedded bench

Highlands bench, width: 200 cm

Dimensions	Weight	Colour	Item No.
W x H x D; cm	kg		
200 x 75 x 65	104,0	Brown	4300065



PRODUCT INFO

- » Board type: Classic
- » 3 bench boards 200 x 19 x 4.0 cm
- » Seat height: 45 cm
- » To be embedded in the ground
- » Height from the ground up

Benches and tables are delivered as a kit. Assembly instructions and materials are included.

Further information regarding installation depth and foot shape can be found on the product specification sheet at www.hanit.de and downloaded from the selected product page.



PROVENCE BENCH

Familiar design – new interpretation

Provence bench, width: 200 cm

Dimensions W x H x D; cm	Weight kg	Colour	Item No.
200 x 80 x 65	77,0	Brown	4300035



PRODUCT INFO

- » Board type:
Premium
- » 5 boards 200 x 12 x 4.7 cm
- » Seat height:
45 cm
- » Legs:
Aluminium casting, anthracite

Optional accessories:

- » **Ground anchor Type 2**

Benches and tables are delivered as a kit. Assembly instructions and materials are included.



SAPO BENCH

Higher backrest for extra comfort

PRODUCT INFO

- » Board type:
Classic
- » 3 seat boards 200 x 14 x 4.0 cm
- » 3 back boards 180 x 14 x 4.0 cm
- » Seat height:
45 cm
- » Legs: Zinc-coated steel
- » To be secured to the ground

Benches and tables are delivered as a kit. Assembly instructions and materials are included.

Sapo bench, width: 200 cm

Dimensions W x H x D; cm	Weight kg	Colour	Item No.
200 x 90 x 61	89,0	Brown	4300120





SAPO SENIOR'S BENCH

Raised seat makes it easier to stand up



Sapo Senior's bench, width: 200 cm			
Dimensions	Weight	Colour	Item No.
W x H x D; cm	kg		
200 x 97 x 61	93,0	Brown	4300146

PRODUCT INFO

- » Board type: Classic
- » 6 bench boards 200 x 14 x 4.0 cm
- » Seat height: 52 cm
- » Legs: zinc-coated steel
- » To be secured to the ground

Benches and tables are delivered as a kit. Assembly instructions and materials are included.





TARLO SENIOR'S BENCH

The perfect support



BUILDING AND CONSTRUCTION

FENCING AND BARRIERS

GROUNDWORK AND SURFACES

OUTDOOR SPACES AND FURNITURE

PLAYGROUND FURNITURE

INDEX

Tarlo Senior's bench, width: 160 cm			
Dimensions	Weight	Colour	Item No.
W x H x D; cm	kg		
160 x 95 x 57,5	80,5	Grey-Brown	4300165



PRODUCT INFO

- » Board type: Premium
- » 6 bench boards 150 x 12 x 4.7 cm
- » Seat height: 52 cm
- » Legs: hanit® recycled plastic with integrated armrest

Optional accessories:

- » **Ground anchor Type 1**

Benches and tables are delivered as a kit. Assembly instructions and materials are included.





AVETO SUN LOUNGER

Rest comfortably on hanit®



Aveto sun lounger, width: 150 cm



Dimensions W x H x D; cm	Weight kg	Colour	Item No.
150 x 119 x 165	195,0	Grey-Brown	4300166
		Grey-Green	4300167
		Grey-Blue	4300168

PRODUCT INFO

- » Board type:
Premium
- » 21 bench boards:
150 x 8 x 4.7 cm
- » Frame:
hanit® sun lounger seat end

Optional accessories:

- » 4 x Ground anchor Type 1

Benches and tables are delivered as a kit. Assembly instructions and materials are included.





STELVIO SET

With tubular metal frame



Stelvio set, width: 252 cm

Dimensions	Weight	Colour	Item No.
W x H x D; cm	kg		
252 x 75 x 250	297,0	Brown	4400007



PRODUCT INFO

- » Board type: Premium
- » 12 bench boards 150 x 10 x 4.7 cm
- » 13 table boards 150 x 10 x 4.7 cm
- » Seat height: 45 cm
- » Tabletop surface: 150 x 150 cm
- » Table height: 75 cm
- » Legs: Steel, zinc-coated

Benches and tables are delivered as a kit. Assembly instructions and materials are included.





SERENGETI SET

Come together - combination of boards



Serengeti set, width: 200 cm ● ● ● ●

Dimensions W x H x D; cm	Weight kg	Colour	Item No.
200 x 76 x 174	195,0	Brown	4400009
		Grey-Green	4400012
		Grey-Blue	4400013
		Grey-Red	4400016

Serengeti set, width: 240 cm, with extended tabletop ●

Dimensions W x H x D; cm	Weight kg	Colour	Item No.
240 x 76 x 174	194,0	Brown	4400001



VERSION WITH EXTENDED TABLETOP



PRODUCT INFO

- » Board type Serengeti:
 - 6 bench boards Premium 200 x 10 x 4.7 cm
 - 6 table boards Premium 200 x 12 x 4.7 cm
- » Board type Serengeti:
 - Version with extended tabletop
 - 6 bench boards Premium 200 x 10 x 4.7 cm
 - 5 table boards Classic 240 x 14 x 4.0 cm
- » This is true for all models:
 - Seat height: 46 cm
 - Tabletop surface: 77 x 200/240 cm
 - Table height: 76 cm

Optional accessories:

- » Ground anchor Type 3

Benches and tables are delivered as a kit. Assembly instructions and materials are included.





ISOLA SET

The picnic all-rounder with one-piece table top



BUILDING AND CONSTRUCTION

FENCING AND BARRIERS

GROUNDWORK AND SURFACES

OUTDOOR SPACES AND FURNITURE

PLAYGROUND FURNITURE

INDEX

Isola set, width: 200 cm

Dimensions W x H x D; cm	Weight kg	Colour	Item No.
200 x 78 x 174	173,0	Brown	4400015



PRODUCT INFO

- » Board type: Premium
- » 6 bench boards 200 x 10 x 4.7 cm
- » 1 Table top 200 x 75 x 6.5 cm
- » Seat height: 46 cm
- » Tabletop surface: 75 x 180/200 cm
- » Table height: 78 cm

Optional accessories:

- » Ground anchor Type 3

Benches and tables are delivered as a kit. Assembly instructions and materials are included.





GATTON ROUND BENCH

The hexagonal bench with backrest



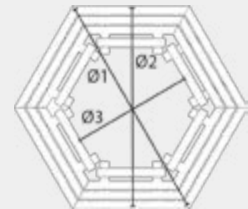
Gatton round bench, outer-Ø: 300 cm			
Dimensions	Weight	Colour	Item No.
W x H x D; cm	kg		
300 x 80 x 260	411,0	Brown	4400011

Gatton round bench, outer-Ø: 400 cm			
Dimensions	Weight	Colour	Item No.
W x H x D; cm	kg		
400 x 80 x 342	472,0	Brown	4400010



PRODUCT INFO

- » Board type: Classic
- » 30 bench boards profile measurement 10 x 4.0 cm
- » Gatton 1:
 - Ø 1 = 300 cm, Ø 2 = 260 cm, Ø 3 = 151 cm
 - length of seat boards: 120/150 cm
- » Gatton 2:
 - Ø 1 = 400 cm, Ø 2 = 342 cm, Ø 3 = 236 cm
 - length of seat boards: 170/200 cm
- » 12 legs



Optional accessories:

- » Ground anchor Type 1

Benches and tables are delivered as a kit. Assembly instructions and materials are included.





BUILDING AND
CONSTRUCTION

FENCING AND
BARRIERS

GROUNDWORK AND
SURFACES

OUTDOOR SPACES
AND FURNITURE

PLAYGROUND
FURNITURE

INDEX



IONA BENCH

The bench and planter system



Iona bench base element

Dimensions W x H x D; cm	Weight kg	Colour	Item No.
290 x 47 x 70	212,0	Brown	4500005

Iona bench add-on element

Dimensions W x H x D; cm	Weight kg	Colour	Item No.
220 x 47 x 70	119,0	Brown	4500007



BASE ELEMENT

ADD-ON ELEMENT

PRODUCT INFO

- » Board type: Premium
- » Base element
3 bench boards 150 x 10 x 4.7 cm
2 planter: Iberis 1
- » Add-on element
3 bench boards 150 x 10 x 4.7 cm
1 planter: Iberis 1

Benches and tables are delivered as a kit. Assembly instructions and materials are included.





GRAND CANYON SHELTER

Shade and shelter all year round

Grand Canyon shelter, width: 280 cm

Dimensions	Weight	Colour	Item No.
W x H x D; cm	kg		
280 x 275 x 255	1.081,0	Brown	4500004



PRODUCT INFO

- » Board type: Premium
- » 11 boards 200 x 10 x 4.7 cm
- » Seat height: 45 cm
- » Table height: 75 cm
- » Tabletop surface: 60 x 200 cm

The shelter is partially assembled on delivery.





COLLODI SKATER BENCH

For sitting, leaning or chilling



For burying, width: 200 cm			
Dimensions	Weight	Colour	Item No.
W x H x D; cm	kg		
200 x 78 x 27,5	85,0	Brown	4500003

PRODUCT INFO

- » Board type: Compact
- » 1 seat board 200 x 27.5 x 6.5/5.5 cm
- » Seat height: 78 cm
- » To be embedded into the ground
- » With longer legs
- » Height from the ground up

Benches and tables are delivered as a kit. Assembly instructions and materials are included.

Further information regarding installation depth and foot shape can be found on the product specification sheet at www.hanit.de and downloaded from the selected product page.





TREMEZZO YOUTH BENCH

For sitting on the backrest

Tremezzo youth bench , width: 200 cm

Dimensions W x H x D; cm	Weight kg	Colour	Item No.
200 x 74 x 72	117,0	Brown	4500001
		Grey-Green-Blue	4500006



PRODUCT INFO

- » Board type: Classic
- » 3 bench boards 200 x 17 x 4.0 cm
- » 2 bench boards 200 x 12 x 4.0 cm
- » Seat height: 45 cm
- » Seat height backrest: 81 cm
- » To be embedded in the ground
- » Height from the ground up

Benches and tables are delivered as a kit. Assembly instructions and materials are included.

Further information regarding installation depth and foot shape can be found on the product specification sheet at www.hanit.de and downloaded from the selected product page.

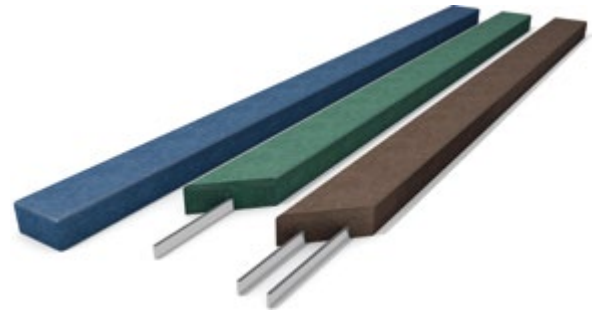




BENCH BOARD CLASSIC

For versatile solutions

Colours



Milled reinforcement, thickness 4 cm					
Width cm	Length cm	Weight kg	Pal. Pcs.	Colour	Item No.
8	150	6,0	80	Brown	4600156
8	180	7,0	80	Brown	4600142
8	200	8,0	80	Brown	4600084
10	150	7,0	80	Brown	4600085
10	180	8,4	80	Brown	4600138
10	200	9,5	80	Brown Grün Blau	4600086 4600130 4600256
12	150	8,0	60	Brown	4600087
12	180	9,7	60	Brown	4600144
12	200	11,0	60	Brown Grün Blau	4600088 4600131 4600273
14	200	12,5	50	Brown	4600089
14	240	15,0	50	Brown	4600090

Two Milled-in reinforcements, thickness 4 cm					
Width cm	Length cm	Weight kg	Pal. Pcs.	Colour	Item No.
17	200	16,3	40	Brown	4600091
17	240	20,0	40	Brown	4600092
19	200	17,8	40	Brown	4600093
19	240	22,0	40	Brown	4600094

Milled reinforcement, thickness 4,5 cm					
Width cm	Length cm	Weight kg	Pal. Pcs.	Colour	Item No.
5,5	200	6,4	85	Brown	4600095



NOTE

- » Assemble Classic style bench boards with a maximum support distance of 130 cm. Individual boards must be interconnected (e.g. using flat steel bar), to distribute the load or to ensure the orientation of the boards.
- » Please refer to the installation recommendations, data sheet, and assembly instructions. These can be found on our website www.hanit.de and downloaded from the selected product page.
- » We offer optional bespoke engraving. Prices and recommendations are available upon request.
- » Reinforcement ends approximately 10 cm from profile end.

**TIPS & TRICKS**

You have to install bench boards on an already existing frame or base?

No problem with our Classic bench board. We can install the reinforcement approximately 1.5 cm off the centre, ask us for details.





BENCH BOARD PREMIUM

Special board with internal reinforcement

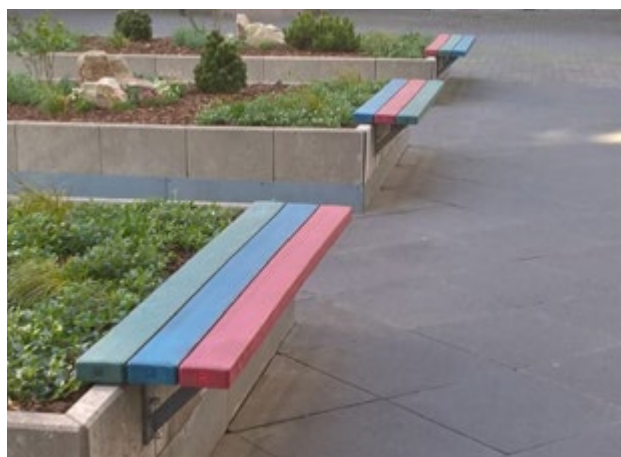
Colours



Interior reinforcement, thickness: 4,7 cm					
Width cm	Length cm	Weight kg	Pa. Pcs.	Colour	Item No.
8	150	6,5	80	Brown	4600161
				Green	4600469
				Blue	4600470
				Red	4600268
8	180	7,8	80	Brown	4600651
8	200	9,0	80	Brown	4600074
				Green	4600379
				Blue	4600380
				Red	4600381
10	150	8,0	80	Brown	4600162
				Green	4600401
				Blue	4600238
				Red	4600387
10	180	9,5	80	Brown	4600244
10	200	10,5	80	Brown	4600158
				Green	4600233
				Blue	4600416
				Red	4600464
12	150	9,0	60	Brown	4600163
				Green	4600382
				Blue	4600277
				Red	4600383
12	180	11,1	60	Brown	4600243
12	200	12,5	60	Brown	4600159
				Green	4600259
				Blue	4600417
				Red	4600465

NOTE

- » Assemble Premium style bench boards with a maximum support distance of 145 cm.
- » Please refer to the installation recommendations, data sheet, and assembly instructions. These can be found on our website www.hanit.de and downloaded from the selected product page.
- » Reinforcement ends approximately 3.5 cm from profile end.





COMPACT BENCH BOARD

The board out of one mould

Colours



SEAT BOARD WITH DOUBLE REINFORCEMENT

Seat board, conical, thickness: 7,5/6,5 cm, double reinforcement ●

Width cm	Length cm	Weight kg	Pal. Pcs.	Colour	Item No.
40	200	54,0	30	Brown	4600111

Back board, conical, thickness: 6,5/5,5 cm, single reinforcement ●

Width cm	Length cm	Weight kg	Pal. Pcs.	Colour	Item No.
27,5	200	32,0	30	Brown	4600110

NOTE

- » Assemble Compact style bench boards with a maximum support distance of 145 cm.
- » Please refer to the installation recommendations, data sheet, and assembly instructions. These can be found on our website www.hanit.de and downloaded from the selected product page.
- » Reinforcement ends approximately 10 cm from profile end.



BACK BOARD WITH SINGLE REINFORCEMENT

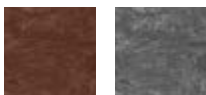




GROUND ANCHOR

Security for your seating

Colours – depending on stock levels



Type 1 – Standard

Dimensions W x H x D; cm	Weight kg	Colour	Item No.
10 x 27 x 48	6,0	Brown	4600108

Type 2 – For Trafalgar Square and Piccadilly models

Dimensions W x H x D; cm	Weight kg	Colour	Item No.
10 x 30 x 65	10,0	Brown	4600764

Type 3 – For Serengeti and Isola sets, Hyde Park table

Dimensions W x H x D; cm	Weight kg	Colour	Item No.
10 x 30 x 140	10,0	Brown	4600763



PRODUCT INFO

For burying or concreting into the ground for benches or tables



¹ Including assembly materials.



ARMREST

For even more comfort

Colour



Type 1 - For Tivoli and Sutton benches (page 74/84)

Dimensions W x H x D; cm	Weight kg	Colour	Item No.
5,5 x 24 x 34	3,0	Brown	4600203

Type 2 - For Piccadilly benches (page 82)

Dimensions W x H x D; cm	Weight kg	Colour	Item No.
5,5 x 24 x 40	3,0	Brown	4600204

Type 3 - For Trafalgar Square benches (page 83)

Dimensions W x H x D; cm	Weight kg	Colour	Item No.
5,5 x 24 x 38	3,0	Brown	4600237





MUSCARI PLANTER

Strong and substantial

Colours



PRODUCT INFO

» Volume: filled to the top edge

Completely assembled. Measurements are outside dimensions. Other sizes available on request. Side profile: 9 x 9 cm. Base: 2.5 cm thick. Support posts: 12 x 16 cm. Plinth height: 8 cm.

Muscari ○ ● ●				
Dimensions	Weight	Colour	Volume	Item No.
W x L x H; cm	kg		litres	
60 x 130 x 50	120,0	Grey	127	4700020
		Brown		4700008
		Black		4700105





VINCA PLANTER

The eye-catcher in many sizes

Colour



Vinca						
Variant		Dimensions W x L x H; cm	Weight kg	Volume litres	Colour	Item No.
Vinca 1	S	88 x 52 x 44	71,5	108	Brown	4700009
	M	88 x 52 x 56	90,0	144	Brown	4700194
	L	88 x 52 x 68	108,0	180	Brown	4700195
Vinca 2	S	108 x 62 x 44	90,5	181	Brown	4700010
	M	108 x 62 x 56	113,0	248	Brown	4700196
	L	108 x 62 x 68	135,0	310	Brown	4700197
Vinca 3	S	139 x 78 x 44	131,7	336	Brown	4700011
	M	139 x 78 x 56	160,0	458	Brown	4700198
	L	139 x 78 x 68	190,0	572	Brown	4700199
Vinca 4	S	166 x 91 x 44	163,0	498	Brown	4700012
	M	166 x 91 x 56	197,0	675	Brown	4700200
	L	166 x 91 x 68	230,0	845	Brown	4700201

PRODUCT INFO

» Volume: without additional ring; filled to the top edge
 Completely assembled. Measurements are outside dimensions. Other sizes available on request. Side profile: 6 x 12 cm. Base: 2.5 cm thick. Plinth height: 6 cm.





IBERIS PLANTER

Neutral and inconspicuous

Colour



Iberis						
Variant		Dimensions W x L x H; cm	Weight kg	Volume litres	Colour	Item No.
Iberis 1	S	70 x 70 x 47	95,0	97	Brown	4700023
	M	70 x 70 x 56	113,0	121	Brown	4700174
	L	70 x 70 x 65	133,0	146	Brown	4700175
Iberis 2	S	70 x 110 x 47	126,0	172	Brown	4700024
	M	70 x 110 x 56	151,0	215	Brown	4700180
	L	70 x 110 x 65	175,0	258	Brown	4700181
Iberis 3	S	110 x 110 x 47	165,0	305	Brown	4700025
	M	110 x 110 x 56	196,0	380	Brown	4700176
	L	110 x 110 x 65	227,0	457	Brown	4700177
Iberis 4	S	110 x 140 x 47	200,0	404	Brown	4700026
	M	110 x 140 x 56	235,0	505	Brown	4700182
	L	110 x 140 x 65	271,0	606	Brown	4700183
Iberis 5	S	140 x 140 x 47	235,0	536	Brown	4700027
	M	140 x 140 x 56	275,0	670	Brown	4700178
	L	140 x 140 x 65	315,0	803	Brown	4700179



PRODUCT INFO

» Volume: without additional ring; filled to the top edge
 Completely assembled. Measurements are outside dimensions. Side profile: 9 x 9 cm. Base: 2.5 cm thick. Plinth height: 9 cm.





TERRA RAISED BED

Planting made easy



Colours



Raised bed Terra 1 ○ ●				
Dimensions	Weight	Volume	Colour	Item No.
W × L × H; cm	kg	litres		
90 × 190 × 63	132,0	685	Grey Brown	4700165 4700166

Raised bed Terra 2 ○ ●				
Dimensions	Weight	Volume	Colour	Item No.
W × L × H; cm	kg	litres		
90 × 190 × 83	165,0	914	Grey Brown	4700103 4700104

PRODUCT INFO

- » Quick assembly – only 7 components
- » Rot-free and no harmful additives
- » Reinforced with ribs on the inner side
- » Volume: filled to the top edge

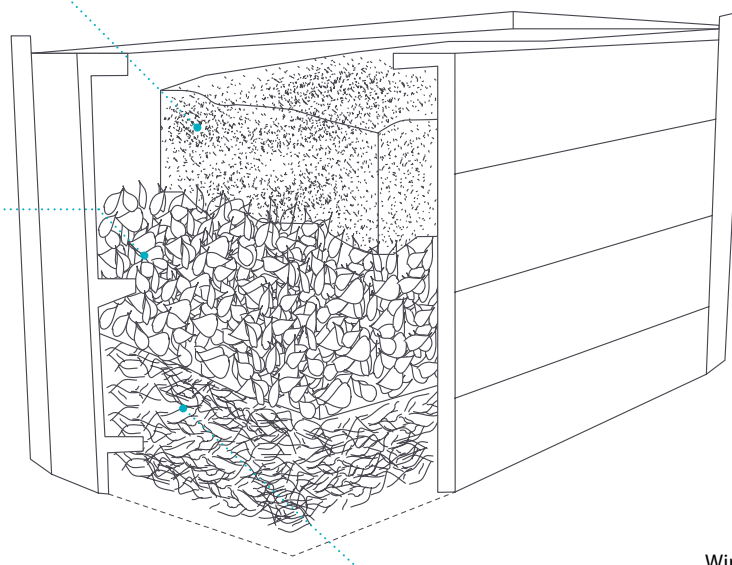
Delivered as a kit excluding base.



SCHEMATIC REPRESENTATION OF FILLING

Top layer: Garden soil, raised bed soil

Middle layer: Compost, dead leaves and lawn cuttings



Base layer: Sticks and twigs

As Base: Wire mesh rodent grid



MODULAR COMPOSTER

Quick to assemble and rot-free

Colour



Type 650 ●

Dimensions W x L x H; cm	Weight kg	Colour	Item No.
100 x 100 x 90	56,0	Brown	4700074

PRODUCT INFO

Volume: approx. 650 litres
 16 boards: 2.5 x 100 x 14 cm
 4 boards: 2.5 x 100 x 7 cm

Delivered as a kit excluding base.



CEMETERY COMPOSTER

Sturdy and durable

Colour



Conical, with aluminium frame ●

Dimensions W x L x H; cm	Weight kg	Colour	Item No.
100 x 100 x 78	76,0	Brown	4700046



PRODUCT INFO

- » Volume: approx. 528 litres
 - » Aluminium frame
- Completely assembled on delivery.



SCORI LITTER BIN

Combinations to suit any situation

Colour



Scori bin round, approx. 55 l

Dimensions	Weight	Colour	Item No.
Ø × H; cm	kg		
42 × 54	18,0	Brown	4800009

Clamping ring

Weight	Item No.
kg	
0,5	4800015

Wire basket

Weight	Item No.
kg	
2,5	9001555

PRODUCT INFO

- » Volume: approx. 55 litres
- » Available in several versions
- » Versatile uses



CLAMPING RING



WIRE BASKET



COLLEC LITTER BIN

Solid and clean

Colour



Bin round, approx. 70 l

Dimensions	Weight	Colour	Item No.
Ø × H; cm	kg		
48 × 66	31,0	Brown	4800006

PRODUCT INFO

- » Volume: approx. 70 litres
- » With removable wire basket





STORA LITTER BIN

The versatile choice

Colour



Bin round, approx. 130 l

Dimensions Ø x H; cm	Weight kg	Colour	Item No.
52 x 100	55,0	Brown	4800004

PRODUCT INFO

- » Volume: approx. 130 litres
- » Lockable lid
- » Lateral hinge



NOTE

Something heavy made easy. Open the bin with a simple flick of the wrist and take the rubbish out comfortably.





PLAYGROUND FURNITURE

hanit® stands for durable, made-for-outdoor products. Who spends the most time outside? Our children, discovering the world through play. Our product range for playgrounds and kindergartens ensures their journeys in discovery are care-free and safe.

The attributes of hanit® and the conceptual design of our products ensure:

- » That products do not splinter, reducing the risk of injuries.
- » No rotting, even in permanent contact with wet soil, moist sand, or when used in watercourses.
- » Rounded edges for sandbox covers.

- » Available in a variety of colours
- » No harmful chemicals or additives
- » Regularly checked and certified according to relevant regulations (eg. DIN 71-3 Toy Safety)
- » Tough and durable

OUTDOOR CLASSROOM**AT ONE WITH NATURE****PLAYING WITH MUD****SANDBOXES****Children's benches and tables**

- » Canetti children's bench with backrest..... *p. 114*
- » Canetti children's bench without backrest..... *p. 114*
- » Canetti children's table *p. 115*
- » Tivoli children's table..... *p. 115*
- » Calero children's bench *p. 116*
- » Calero children's table *p. 116*
- » Pippolino children's bench..... *p. 117*
- » Forio children's set..... *p. 118–119*

Sandboxes

- » Dahna sandbox..... *p. 121*
- » Namib sandbox *p. 122*
- » Sahara sandbox *p. 123*
- » Kalahari sandbox *p. 124*
- » Gobi sandbox..... *p. 124*

Learning and experience

- » Mud table *p. 120*
- » Terra kid's raised bed *p. 125*



CANETTI CHILDREN'S SERIES

Child-friendly seating



CANETTI CHILDREN'S BENCH

The first hanit® children's bench with backrest

Canetti children's bench with backrest, width: 150 cm

Dimensions W x H x D; cm	Weight kg	Colour	Item No.
150 x 63 x 53	52,0	Brown	5000091
		Grey-Green	5000092
		Grey-Blue	5000093
		Grey-Red	5000094



CANETTI CHILDREN'S BENCH

Without backrest

Canetti children's bench w/o backrest, width: 150 cm

Dimensions W x H x D; cm	Weight kg	Colour	Item No.
150 x 34 x 34	28,5	Brown	5000026
		Grey-Green	5000027
		Grey-Blue	5000028
		Grey-Red	5000031



CANETTI CHILDREN'S TABLE

With closed tabletop

Canetti children's table, width: 150 cm			
Dimensions	Weight	Colour	Item No.
W x H x D; cm	kg		
150 x 57 x 60	65,8	Brown	5000076
		Grey-Green	5000077
		Grey-Blue	5000078
		Grey-Red	5000079



TIVOLI CHILDREN'S TABLE

With individual boards

Tivoli children's table, width: 150 cm			
Dimensions	Weight	Colour	Item No.
W x H x D; cm	kg		
150 x 59 x 60	68,5	Brown	5000035
		Grey-Green	5000036
		Grey-Blue	5000037
		Grey-Red	5000032



PRODUCT INFO CANETTI CHILDREN'S SERIES

- » Board type: Premium
 - » Canetti bench with backrest: 6 bench boards: 150 x 8 x 4.7 cm
 - » Canetti bench without backrest: 3 bench boards: 150 x 8 x 4.7 cm
 - » Seat height: 34 cm
 - » Canetti children's table: Closed tabletop
Tabletop surface: 60 x 150 cm
Table height: 57 cm
 - » Tivoli children's table: 5 table boards: 150 x 10 x 4.7 cm
Tabletop surface: 58 x 150 cm
Table height: 59 cm
- Optional accessories:**
- » **Ground anchor Type 1**
(Bench without backrest)
 - » **Ground anchor Type 2**
(Bench with backrest and tables)

Benches and tables are delivered as a kit. Assembly instructions and materials are included.



CALERO CHILDREN'S BENCH

Lively, trendy, colourful

Calero children's bench, width: 150 cm

Dimensions W x H x D; cm	Weight kg	Colour	Item No.
150 x 34 x 28	51,0	Grey-Blue Green-Red-Blue	5000010 5000011



PRODUCT INFO

- » Boards: square profiles
 - » 3 profiles: 132 x 9 x 9 cm
 - » Seat height: 34 cm
- Optional accessories:**
- » **Ground anchor Type 1**

Benches and tables are delivered as a kit. Assembly instructions and materials are included.



CALERO CHILDREN'S TABLE

So colourful!

PRODUCT INFO

- » 5 table profiles: 132 x 9 x 9 cm
 - » Table height: 57 cm
 - » Tabletop surface: 47 x 150 cm
- Optional accessories:**
- » **Ground anchor Type 1**

Benches and tables are delivered as a kit. Assembly instructions and materials are included.



Calero children's table, width: 150 cm

Dimensions W x H x D; cm	Weight kg	Colour	Item No.
150 x 57 x 47	101,4	Grey-Blue Green-Blue-Red	5000012 5000013





PIPPOLINO CHILDREN'S BENCH

The bench that grows with you

Pippolino children's bench, width: 150 cm

Dimensions W x H x D; cm	Weight kg	Colour	Item No.
150 x 70 x 68	55,0	Grey-Green-Blue	5000014

PRODUCT INFO

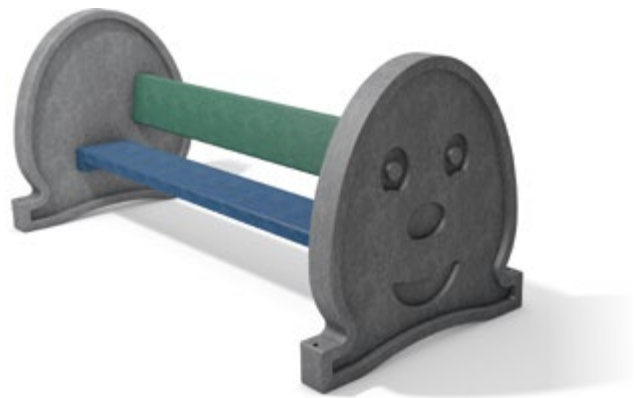
- » Board type: Classic
- » 1 seat board
138 x 19 x 4.0 cm
- » 1 back board
138 x 17 x 4.0 cm
- » Seat height: 25/34 cm¹

Optional accessories:

- » **Ground anchor Type 2**

¹Seat height can be optionally attached to 25 cm

Benches and tables are delivered as a kit. Assembly instructions and materials are included.





FORIO CHILDREN'S SET

Tailor-made for kids



Forio children's set, width: 150 cm ● ● ● ●

Dimensions W x H x D; cm	Weight kg	Colour	Item No.
150 x 57 x 108	83,0	Brown	5000021
		Grey-Green	5000020
		Grey-Blue	5000019
		Grey-Red	5000033



PRODUCT INFO

- » 1 tabletop:
150 x 60 x 8.0 cm
- » 2 bench boards:
150 x 19 x 4.0 cm
- » Seat height: 34 cm
- » Table height: 57 cm
- » Tabletop surface:
60 x 150 cm

Optional accessories:

- » Ground anchor Type 3

Benches and tables are delivered as a kit. Assembly instructions and materials are included.





FORIO BACKREST

For added comfort

Forio backrest, width: 150 cm			
Dimensions	Weight	Colour	Item No.
W x H x D; cm	kg		
150 x 35 x 20	17,0	Brown	5000112
		Green	5000115
		Blue	5000114
		Red	5000113



PRODUCT INFO

- » 1 back board 150 x 20 x 35 cm
- » 2 galvanised arms/supports
- » Can be ordered in different colour combinations. For backrests on both sides of the picnic bench, please order two items.
- » Dimensions Forio set with backrests on both sides: 125 x 60 cm (W x H)

Benches and tables are delivered as a kit. Assembly instructions and materials are included.





MUD TABLE

Splinter-free fun for years to come



End table

Dimensions	Weight	Colour	Item No.
W x L x Ha x Hb; cm	kg		
78 x 150 x 29/29	72,0	Grey-Brown	5200035

Flow element 1

Dimensions	Weight	Colour	Item No.
W x L x Ha x Hb; cm	kg		
78 x 150 x 42/52	76,0	Grey-Brown	5200031

Flow element 2

Dimensions	Weight	Colour	Item No.
W x L x Ha x Hb; cm	kg		
78 x 150 x 62/72	82,0	Grey-Brown	5200043

Flow element 3

Dimensions	Weight	Colour	Item No.
W x L x Ha x Hb; cm	kg		
78 x 150 x 82/92	88,0	Grey-Brown	5200040

Water pump stand

Dimensions	Weight	Colour	Item No.
W x L x H; cm	kg		
100 x 100 x 22	105,0	Brown	5200008

Water pump with stand

Dimensions	Weight	Colour	Item No.
W x L x H; cm	kg		
100 x 100 x 127	135,0	Brown-Grey	5200028

Colours



PRODUCT INFO

- » Legs to be embedded in the ground
- » Dimensions tray: 60 x 150 x 11 cm
- » Reinforced ribs on the underside
- » Water run-out available on one or two sides, depending on the element

Flow element: one water outlet

End table: two water outlets

- » The height information refers to the finished installation height and describes the distance between the top edge of the soil to the bottom edge of the element (Flow elements have an incline)

Delivered as a kit, ready to be assembled.

Pump not included.

Individual sections, parts and elements also available.





DAHNA SANDBOX

Circle in the Square



Dahna sandbox



Dimensions	Weight	Colour	Item No.
W x L x H; cm	kg		
200 x 200 x 28	185,0	Grey-Blue-Green	5100082

PRODUCT INFO

- » Side profiles: each side 2 round posts Ø 12 cm
- » 2 seat rest 4.0 x 17 cm
- » Dimensions: outside edge of seat

Delivered as a kit excluding base.





NAMIB SANDBOX

Simple, square and practical

Colours



PRODUCT INFO

- » Side profiles: 9.0 x 9.0 cm
- » Seat rest: 4.0 x 19 cm
- » Dimensions: outside edge of seat

Delivered as a kit excluding base. Other dimensions available on request.



Namib sandbox 1

Dimensions W x L x H; cm	Weight kg	Colour	Item No.
200 x 200 x 31	214,0	Brown	5100020

Namib sandbox 2

Dimensions W x L x H; cm	Weight kg	Colour	Item No.
300 x 300 x 31	333,0	Brown	5100021

Namib sandbox 3

Dimensions W x L x H; cm	Weight kg	Colour	Item No.
400 x 400 x 31	467,0	Brown	5100022

Namib sandbox 4


Dimensions W x L x H; cm	Weight kg	Colour	Item No.
500 x 500 x 31	586,0	Brown	5100023




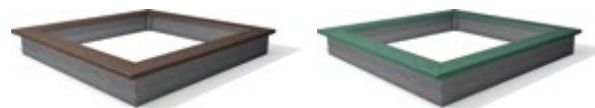


SAHARA SANDBOX

Wonderland for the imagination

Sahara sandbox 1 			
Dimensions W x L x H; cm	Weight kg	Colour	Item No.
200 x 200 x 27	179,0	Grey-Brown	5100028
		Grey-Grün	5100029
		Grey-Blau	5100030
		Grey-Rot	5100049

Sahara sandbox 2 			
Dimensions W x L x H; cm	Weight kg	Colour	Item No.
300 x 300 x 27	275,5	Grey-Brown	5100039
		Grey-Grün	5100040
		Grey-Blau	5100041
		Grey-Rot	5100050



PRODUCT INFO

- » Side profiles: 8.0 x 23 cm
- » Seat rest: 4.0 x 19 cm
- » Dimensions: outside edge of seat

Delivered as a kit excluding base. Other dimensions available on request.





KALAHARI SANDBOX

Fun in every corner

Colours



Sandkasten Kalahari 1

Dimensions Ø × H; cm	Weight kg	Colour	Item No.
175 × 31	73,7	Brown	5100018

Sandkasten Kalahari 2

Dimensions Ø × H; cm	Weight kg	Colour	Item No.
240 × 31	101,5	Brown	5100019

PRODUCT INFO

- » Side profiles: 3.8 x 13 cm
- » Seat rest: 4.0 x 14 cm
- » Dimensions: outside edge of seat

Delivered as a kit excluding base. Other dimensions available on request.



GOBI SANDBOX

Big fun, large or small

Colours



Sandkasten Gobi 1

Dimensions W × L × H; cm	Weight kg	Colour	Item No.
120 × 120 × 31	73,5	Brown	5100024

Sandkasten Gobi 2

Dimensions W × L × H; cm	Weight kg	Colour	Item No.
240 × 240 × 31	142,5	Brown	5100025

PRODUCT INFO

- » Side profiles: 3.8 x 13 cm
- » Seat rest: 4.0 x 14 cm
- » Dimensions: outside edge of seat

Delivered as a kit excluding base.





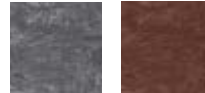
TERRA KID'S RAISED BED

For little green fingers



Terra kid's raised bed 1				
Dimensions	Weight	Volume	Colour	Item No.
W x L x H; cm	kg	litres		
90 x 190 x 63	132,0	685	Grey Brown	4700165 4700166

Colours



PRODUCT INFO

- » Quick assembly – only 7 components
- » No harmful additives
- » Reinforced with ribs on the inner side
- » Volume: filled to the top edge
- » See page 108 (chapter 4) for how to fill a raised bed

Delivered as a kit excluding base and accessories.



INDEX

You know exactly which hanit® product you are looking for or you know the product name or category? Use the index to find the corresponding document page.

	Document Page
A	
Amphibian guard	32
Armrest	104
Aveto sun lounger	90
B	
Bank reinforcement	32
Barrier	55
Bavaria bench	81
Beams	26 – 27
Bench board Classic	100 – 101
Bench board Premium	102
Board profile	34 – 35
Board profile (tongue & groove, reinforced)	36
Board profile (tongue & groove)	36
Board profile, reinforced	33
Board profiles	33 – 37
Boundary stone	27
Burrowing barrier	32
C	
Calero Bar	79
Calero bench	78
Calero children's bench	116
Calero children's table	116
Calero stool	79
Calero high table	79
Calero series	78 – 79
Calero table	78
Canetti bench	74
Canetti children's bench with backrest	114

	Document Page
Canetti children's bench without backrest	114
Canetti children's table	115
Cemetery composter	109
Children's benches and tables	114 – 119
Collec litter bin	110
Collodi skater bench	98
Compact bench board	103
Cross-profile stake	45
D	
Dahna sandbox	121
Decking	65
Diamond head bollard	46
Dome shaped bollard	48
E	
Eco slabs	66
F	
Footpath planks (w/ or w/o reinforcement)	61 – 63
Footpath planks, tongue & groove (w/ or w/o reinforcement)	60
Forio back rest	119
Forio children's set	118 – 119
Foundation pad	31
G	
Garden edging	28
Gatton round bench	94
Gobi sandbox	124
Grand Canyon shelter	97
Grass edging	27
Ground anchor	104

	Document Page
Ground reinforcement	60 – 71
H	
Handrail System Maxi	53
Handrail System Easy	54
Hanpave	67
Heavy duty ground grid	70
High Line bench	85
Highlands bench	86
Hyde Park bench	76
Hyde Park bench connection module	77
Hyde Park bench extension module	77
Hyde Park bench without backrest	76
Hyde Park series	76 – 77
Hyde Park table	77
I-K	
Iberis planter	107
INB Paddock slab	69
Iona bench	96
Isola set	93
Kalahari sandbox	124
L	
L-stone	24
L-stone corner	25
M	
Mira bench	81
Modular composter	109
Mud table	120
Muscari planter	105

	Document Page
N-O	
Namib sandbox	122
Ogee palisade, hollow profile	16 – 18
Ogee palisade, solid profile	16 – 18
P-Q	
Paddock gate	52
Paddock slab	68
Palisades	16 – 23
Pales and posts	49
Pasture fence	50 – 51
Paving stone	71
Piccadilly bench	82
Pile	64
Pippolino children's bench	117
Posts	40 – 45
Pre-assembled boardwalk element	66
Privacy fence	56
Provence bench	87
Pyramid head bollard	47
R	
Railing components	55
Railing system	53 – 54
Rectangular palisade, hollow profile	22 – 23
Round palisade, hollow profile	20 – 21
Round palisade, solid profile	20 – 21
Round posts	40 – 42
Round posts, reinforced	43

INDEX

	Document Page
S	
Sahara sandbox	123
Sandboxes	121 – 124
Sapo bench	87
Sapo senior's bench	88
Scori litter bin	110
Serengeti set	92
Somerset bench	86
Square posts	44
Square posts, reinforced	45
Square profiles	29 – 30
Square profile, bevelled edge and reinforced	45
Stall board	37
Standard sheet	31
Stelvio set	91
Stora litter bin	111
Sutton bench	84
T	
Tarlo senior's bench	89
Taurus forest bench	80
Taurus forest bench, without backrest	80
Taurus series	80
Taurus table	80
Terra kid's raised bed	125
Terra raised bed	108
Tivoli bench	74
Tivoli children's table	115
Tivoli series	74 – 75
Tivoli table	75
Trafalgar Square bench	83
Tremezzo youth bench	99
Trinity table	75

	Document Page
U-V	
Ueno Bench	85
Vinca planter	106

WARRANTY/ TERMS & CONDITIONS

The General Terms and Conditions and guarantee conditions valid at the time of the order shall apply. These can be viewed on our website under the following links:

<https://www.hahnkunststoffe.de/en/Company/Terms-and-Conditions>

<https://www.hahnkunststoffe.de/en/Company/Warranty>

IMPRINT

HAHN Kunststoffe GmbH

Gebäude 1027 · 55483 Hahn-Flughafen

T + 49 6543 9886 - 0

info@hanit.de

www.hanit.de

DESIGN & REALIZATION

huthwelkersart werbeagentur

www.huthwelkersart.de

COPYRIGHT

Reprinting, even of extracts, is prohibited without the written approval of HAHN Plastics Ltd. and, where approval is given, the corresponding reference to the source must be provided. The same shall apply to recording in electronic databases and reproductions on CD-ROM.

MISCELLANEOUS

We cannot be liable for print errors. Subject to errors; we reserve the right to make any technical changes and improvements. Printed colours may vary slightly from the originals. All product illustrations alike. Product illustrations are not to scale.

PICTURE CREDITS

zweipunkt null (3D visualisations), HAHN Kunststoffe GmbH, Heisters & Partner, Martin Magunia · Bonn, Regina Recht · www.reginarecht.com, Gettyimages, AdobeStock, Fotolia, iStock, shutterstock



HAHN Kunststoffe GmbH

Gebäude 1027
55483 Hahn-Flughafen
T +49 6543 9886-0
info@hanit.de

www.hanit.de

HAHN France S.A.S.

57320 Bouzonville, France
www.hahnfrance.fr

HAHN Plastics Ltd.

Swinton M27 8LJ, United Kingdom
www.hahnplastics.com

HAHN Plastics (North America) Ltd.

Waterloo, ON N2V 1N3, Canada
www.hahnplastics.ca

PRECO SYSTEM S.R.L.

33013 Gemona del Friuli (UD), Italy
www.plasticariciclata.it

HAHN Iberia Plástico Reciclado S.L.U.

31210 Los Arcos (Navarra), Spain
www.hahniberia.com